



CATÁLOGO DE PIEZAS DE REPUESTO  
**ZONTES** | M 350



**M 350**



| FIG. 1 | PARABRISAS | Nº | CÓDIGO          | DESCRIPCIÓN                     | CANT. |
|--------|------------|----|-----------------|---------------------------------|-------|
|        |            | 1  | ZT1246200048000 | TAPON PARABRISAS                | 4     |
|        |            | 2  | ZT1226200031000 | PLACA FIJ. SUP. PARABRISAS IZQ. | 1     |
|        |            | 3  | ZT1251100328000 | BULON M6X14 8.5X3               | 4     |
|        |            | 4  | ZT1250105137093 | BULON M6X16                     | 1     |
|        |            | 5  | ZT1246200012000 | SILENT-BLOCK PLACA PARABRISAS   | 2     |
|        |            | 6  | ZT1226200057000 | LOGO ZONTES PARABRISAS          | 1     |
|        |            | 7  | ZT1226200030000 | PLACA FIJ. SUP. PARABRISAS DER. | 1     |
|        |            | 8  | ZT1250205040095 | BULON M8X16                     | 2     |
|        |            | 9  | ZT1274200136000 | ARANDELA                        | 2     |
|        |            | 10 | ZT1250601093000 | RODAMIENTO 6802                 | 2     |
|        |            | 11 | ZT4024200078051 | BRAZO SUPERIOR DE PARABRISAS    | 2     |
|        |            | 12 | ZT4026200005051 | SOPORTE INF. DER. PARABRISAS    | 1     |
|        |            | 13 | ZT1244100052000 | ARANDELA GOMA 8.5X14X1          | 8     |
|        |            | 14 | ZT1274200030000 | PERNO FIJACIÓN DE PARABRISAS    | 4     |
|        |            | 15 | ZT4026200010051 | SOPORTE INF. IZQ. PARABRISAS    | 1     |
|        |            | 16 | ZT1260100295000 | RESORTE BRAZO PARABRISAS        | 2     |
|        |            | 17 | ZT1264100006000 | SEGUER E                        | 4     |
|        |            | 18 | ZT1250201046000 | TORNILLO                        | 4     |
|        |            | 19 | ZT4024200081051 | SOPORTE BRAZO INFERIOR          | 2     |
|        |            | 20 | ZT1244200075000 | BUJE PARABRISAS                 | 4     |
|        |            | 21 | ZT4024200079051 | BRAZO INFERIOR IZQUIERDO        | 1     |
|        |            | 22 | ZT4024200080051 | BRAZO INFERIOR DERECHO          | 1     |
|        |            | 23 |                 |                                 |       |
|        |            | 24 |                 |                                 |       |

| FIG. 2 | INSTRUMENTAL TFT | Nº | CÓDIGO          | DESCRIPCIÓN                       | CANT. |
|--------|------------------|----|-----------------|-----------------------------------|-------|
|        |                  | 1  | ZT1224100010000 | REMACHE PLASTICO EXPANSIÓN        | 8     |
|        |                  | 2  | ZT1251200050094 | BULON PARKER 3.9X12               | 6     |
|        |                  | 3  | ZT1251100101000 | BULON M6X12 (NO STD)              | 2     |
|        |                  | 4  | ZT4136200021000 | COBERTOR MOTOR PARABRISAS         | 1     |
|        |                  | 5  | ZT4136400010000 | COBERTOR INSTRUMENTAL             | 1     |
|        |                  | 6  | ZT1244100081000 | SILENT-BLOCK ADHESIVO 10X100X2    | 1     |
|        |                  | 7  | ZT4136400009000 | SOPORTE INSTRUMENTAL TFT 350      | 1     |
|        |                  | 8  | ZT1250301020093 | TUERCA M6                         | 3     |
|        |                  | 9  | ZT1250502010093 | ARANDELA ESP. 6.1                 | 3     |
|        |                  | 10 | ZT1244200092000 | SILENT-BLOCK INSTRUMENTAL         | 3     |
|        |                  | 11 | ZT1166400015000 | INSTRUMENTAL TFT N (6.75)         | 1     |
|        |                  | 12 | ZT1240300007000 | GOMA SILENT-BLOCK BATERÍA         | 1     |
|        |                  | 13 | ZT1226200037000 | SOPORTE COBERTOR MOTOR PARABRISAS | 1     |
|        |                  | 14 | ZT1251300063093 | GRAMPA M6X11X15                   | 12    |
|        |                  | 15 | ZT1251100120093 | BULÓN M6X12                       | 4     |
|        |                  | 16 | ZT1274100007000 | BUJE                              | 4     |
|        |                  | 17 | ZT1244100004000 | GOMA SILENT-BLOCK                 | 4     |
|        |                  | 18 | ZT1251100102000 | BULON M6X16 (NO STD)              | 4     |
|        |                  | 19 | ZT4046201027021 | CUBRE FARO GIRO DER. DELANTERO    | 1     |
|        |                  | 20 | ZT1176200003000 | FARO GIRO DER. DELANTERO          | 1     |
|        |                  | 21 | ZT4046201028021 | CUBRE FARO GIRO IZQ. DELANTERO    | 1     |
|        |                  | 22 | ZT1176200002000 | FARO GIRO IZQ. DELANTERO          | 1     |
|        | 23               |    |                 |                                   |       |
|        | 24               |    |                 |                                   |       |

| FIG. 3 | PANEL FRONTAL | Nº              | CÓDIGO                           | DESCRIPCIÓN | CANT. |
|--------|---------------|-----------------|----------------------------------|-------------|-------|
|        | 1             | ZT1251100101000 | BULON M6X12 (NO STD)             | 6           |       |
|        | 2             | ZT4046402354063 | FRENTE AZUL 350                  | 1           |       |
|        | 3             | ZT1244100002000 | SILENT-BLOCK CACHAS TANQUE       | 2           |       |
|        | 4             | ZT1251200050094 | BULON PARKER 3.9X12              | 2           |       |
|        | 5             | ZT4046402355063 | CACHA FRENTE IZQ. AZUL 350       | 1           |       |
|        | 6             | ZT1251100328000 | BULON M6X14 8.5X3                | 6           |       |
|        | 7             | ZT4046402356063 | CACHA FRENTE DER. AZUL 350       | 1           |       |
|        | 8             | ZT1251300063093 | GRAMPA M6X11X15                  | 8           |       |
|        | 9             | ZT1176200001000 | FARO DELANTERO ALTA/BAJA         | 1           |       |
|        | 10            | ZT1224100010000 | REMACHE PLASTICO EXPANSIÓN       | 2           |       |
|        | 11            | ZT1246200052000 | DECORATIVO ADHESIVO IZQ. FRONTAL | 1           |       |
|        | 12            | ZT1246200053000 | DECORATIVO ADHESIVO DER. FRONTAL | 1           |       |
|        | 13            | ZT1244100081000 | SILENT-BLOCK ADHESIVO 10X100X2   | 1           |       |
| 14     |               |                 |                                  |             |       |
| 15     |               |                 |                                  |             |       |
| 16     |               |                 |                                  |             |       |
| 17     |               |                 |                                  |             |       |
| 18     |               |                 |                                  |             |       |
| 19     |               |                 |                                  |             |       |
| 20     |               |                 |                                  |             |       |
| 21     |               |                 |                                  |             |       |
| 22     |               |                 |                                  |             |       |
| 23     |               |                 |                                  |             |       |
| 24     |               |                 |                                  |             |       |

| FIG. 4 | SOPORTE FAROS | Nº | CÓDIGO          | DESCRIPCIÓN                      | CANT. |
|--------|---------------|----|-----------------|----------------------------------|-------|
|        |               | 1  | ZT1251200050094 | BULON PARKER 3.9X12              | 10    |
|        |               | 2  | ZT1251100328000 | BULON M6X14 8.5X3                | 6     |
|        |               | 3  | ZT1276200016000 | DEFLECTOR AIRE FARO CENTRAL      | 1     |
|        |               | 4  | ZT1176200006000 | FARO CENTRAL DIURNA              | 1     |
|        |               | 5  | ZT1176200004000 | FARO IZQ. DIURNA                 | 1     |
|        |               | 6  | ZT1176200005000 | FARO DER. DIURNA                 | 1     |
|        |               | 7  | ZT4046202082021 | SOPORTE FAROS POSICIÓN DIURNA    | 1     |
|        |               | 8  | ZT1251300063093 | GRAMPA M6X11X15                  | 4     |
|        |               | 9  | ZT1244100002000 | SILENT-BLOCK CACHAS TANQUE       | 2     |
|        |               | 10 | ZT1246200052000 | DECORATIVO ADHESIVO IZQ. FRONTAL | 1     |
|        |               | 11 | ZT1246200053000 | DECORATIVO ADHESIVO DER. FRONTAL | 1     |
|        |               | 12 | ZT1246200051000 | SILENT-BLOCK ADHESIVO 6X100X5    | 0.5   |
| 13     |               |    |                 |                                  |       |
| 14     |               |    |                 |                                  |       |
| 15     |               |    |                 |                                  |       |
| 16     |               |    |                 |                                  |       |
| 17     |               |    |                 |                                  |       |
| 18     |               |    |                 |                                  |       |
| 19     |               |    |                 |                                  |       |
| 20     |               |    |                 |                                  |       |
| 21     |               |    |                 |                                  |       |
| 22     |               |    |                 |                                  |       |
| 23     |               |    |                 |                                  |       |
| 24     |               |    |                 |                                  |       |

| FIG. 5 | SOPORTE PARABRISAS | Nº | CÓDIGO          | DESCRIPCIÓN                          | CANT. |
|--------|--------------------|----|-----------------|--------------------------------------|-------|
|        |                    | 1  | ZT1251100120093 | BULÓN M6X12                          | 5     |
|        |                    | 2  | ZT1270300273000 | PASACABLE FLEX. L=73                 | 1     |
|        |                    | 3  | ZT1274100007000 | BUJE                                 | 2     |
|        |                    | 4  | ZT1244100004000 | GOMA SILENT-BLOCK                    | 2     |
|        |                    | 5  | ZT1186200016000 | UNIDAD DE CONTROL DE PARABRISAS X2   | 1     |
|        |                    | 6  | ZT1276400051000 | SOPORTE UNIDAD CONTROL DE PARABRISAS | 1     |
|        |                    | 7  | ZT1276200043000 | ABRAZADERA FLEXIBLE 57MM             | 2     |
|        |                    | 8  | ZT1250105148093 | BULÓN M6X25                          | 3     |
|        |                    | 9  | ZT4026200012051 | SOPORTE PARABRISAS                   | 1     |
|        |                    | 10 | ZT1184200074000 | MOTOR DEL PARABRISAS                 | 1     |
|        |                    | 11 | ZT1244200074000 | PROTECTOR DEL MOTOR DEL PARABRISAS   | 1     |
|        |                    | 12 | ZT1240300007000 | GOMA SILENT-BLOCK BATERÍA            | 1     |
|        |                    | 13 | ZT1251100102000 | BULÓN M6X16 (NO STD)                 | 3     |
|        |                    | 14 | ZT1250501010000 | GROWER 6                             | 3     |
|        |                    | 15 | ZT1276200032000 | TAPA MOTOR PARABRISAS                | 1     |
|        | 16                 |    |                 |                                      |       |
|        | 17                 |    |                 |                                      |       |
|        | 18                 |    |                 |                                      |       |
|        | 19                 |    |                 |                                      |       |
|        | 20                 |    |                 |                                      |       |
|        | 21                 |    |                 |                                      |       |
|        | 22                 |    |                 |                                      |       |
|        | 23                 |    |                 |                                      |       |
|        | 24                 |    |                 |                                      |       |

| FIG. 6 | GUARDABARRO DELANTERO | Nº | CÓDIGO          | DESCRIPCIÓN                    | CANT. |
|--------|-----------------------|----|-----------------|--------------------------------|-------|
|        |                       | 1  | ZT1250205031091 | BULON M6X30                    | 2     |
|        |                       | 2  | ZT1251300063093 | GRAMPA M6X11X15                | 6     |
|        |                       | 3  | ZT4046402349063 | TAPA DER. GUARDABARRO AZUL 350 | 1     |
|        |                       | 4  | ZT1226400026000 | GUARDABARRO DELANTERO          | 1     |
|        |                       | 5  | ZT4046402348063 | TAPA ZQ. GUARDABARRO AZUL 350  | 1     |
|        |                       | 6  | ZT1250503039000 | ARANDELA 6X1                   | 2     |
|        |                       | 7  | ZT1251100328000 | BULON M6X14 8.5X3              | 2     |
|        |                       | 8  | ZT1251100101000 | BULON M6X12 (NO STD)           | 4     |
|        |                       | 9  |                 |                                |       |
|        |                       | 10 |                 |                                |       |
|        |                       | 11 |                 |                                |       |
|        |                       | 12 |                 |                                |       |
|        |                       | 13 |                 |                                |       |
|        |                       | 14 |                 |                                |       |
|        |                       | 15 |                 |                                |       |
|        |                       | 16 |                 |                                |       |
|        |                       | 17 |                 |                                |       |
|        |                       | 18 |                 |                                |       |
|        |                       | 19 |                 |                                |       |
|        |                       | 20 |                 |                                |       |
|        |                       | 21 |                 |                                |       |
|        |                       | 22 |                 |                                |       |
|        |                       | 23 |                 |                                |       |
|        |                       | 24 |                 |                                |       |

| FIG. 7 | CUBRE CARTER | Nº | CÓDIGO          | DESCRIPCIÓN                    | CANT. |
|--------|--------------|----|-----------------|--------------------------------|-------|
|        |              | 1  | ZT1226400120000 | CARENADO FRONTAL INFERIOR 350  | 1     |
|        |              | 2  | ZT1251100328000 | BULON M6X14 8.5X3              | 5     |
|        |              | 3  | ZT1251300063093 | GRAMPA M6X11X15                | 4     |
|        |              | 4  | ZT1224200008000 | GRAPAS PLASTICO DE CABLE       | 1     |
|        |              | 5  | ZT1224100010000 | REMACHE PLASTICO EXPANSIÓN     | 7     |
|        |              | 6  | ZT4136200025000 | DEFLECTOR AIRE RADIADOR        | 1     |
|        |              | 7  | ZT1226400138000 | PLACA DECORATIVA CUBRE CARTER  | 1     |
|        |              | 8  | ZT1251200050094 | BULON PARKER 3.9X12            | 2     |
|        |              | 9  | ZT1226400121000 | CUBRE CARTER INFERIOR          | 1     |
|        |              | 10 | ZT1240300007000 | GOMA SILENT-BLOCK BATERÍA      | 1     |
|        |              | 11 | ZT1244100081000 | SILENT-BLOCK ADHESIVO 10X100X2 | 0.2   |
| 12     |              |    |                 |                                |       |
| 13     |              |    |                 |                                |       |
| 14     |              |    |                 |                                |       |
| 15     |              |    |                 |                                |       |
| 16     |              |    |                 |                                |       |
| 17     |              |    |                 |                                |       |
| 18     |              |    |                 |                                |       |
| 19     |              |    |                 |                                |       |
| 20     |              |    |                 |                                |       |
| 21     |              |    |                 |                                |       |
| 22     |              |    |                 |                                |       |
| 23     |              |    |                 |                                |       |
| 24     |              |    |                 |                                |       |

| FIG. 8 | POSAPIE CONDUCTOR IZQUIERDO | Nº | CÓDIGO          | DESCRIPCIÓN                    | CANT. |
|--------|-----------------------------|----|-----------------|--------------------------------|-------|
|        |                             | 1  | ZT4136200009000 | PLACA POSAPIE CONDUCTOR IZQ.   | 1     |
|        |                             | 2  | ZT1246200005000 | GOMA POSAPIE CONDUCTOR IZQ.    | 1     |
|        |                             | 3  | ZT1244100002000 | SILENT-BLOCK CACHAS TANQUE     | 4     |
|        |                             | 4  | ZT1251100328000 | BULON M6X14 8.5X3              | 7     |
|        |                             | 5  | ZT1224100010000 | REMACHE PLASTICO EXPANSIÓN     | 2     |
|        |                             | 6  | ZT1251100120093 | BULÓN M6X12                    | 1     |
|        |                             | 7  | ZT1274100018000 | BUJE SEPARADOR SILENCIADOR     | 1     |
|        |                             | 8  | ZT1251300063093 | GRAMPA M6X11X15                | 5     |
|        |                             | 9  | ZT4046402036063 | CARENADO INF. IZQ. AZUL        | 1     |
|        |                             | 10 | ZT1226200020100 | POSAPIE CONDUCTOR IZQUIERDO    | 1     |
|        |                             | 11 | ZT1250105136093 | BULON M6X12                    | 1     |
|        |                             | 12 | ZT1276200004000 | SOPORTE POSAPIE CONDUCTOR IZQ. | 1     |
| 13     |                             |    |                 |                                |       |
| 14     |                             |    |                 |                                |       |
| 15     |                             |    |                 |                                |       |
| 16     |                             |    |                 |                                |       |
| 17     |                             |    |                 |                                |       |
| 18     |                             |    |                 |                                |       |
| 19     |                             |    |                 |                                |       |
| 20     |                             |    |                 |                                |       |
| 21     |                             |    |                 |                                |       |
| 22     |                             |    |                 |                                |       |
| 23     |                             |    |                 |                                |       |
| 24     |                             |    |                 |                                |       |

| FIG. 9 | POSAPIE CONDUCTOR DERECHO | Nº | CÓDIGO          | DESCRIPCIÓN                    | CANT. |
|--------|---------------------------|----|-----------------|--------------------------------|-------|
|        |                           | 1  | ZT4136200010000 | PLACA POSAPIE CONDUCTOR DER.   | 1     |
|        |                           | 2  | ZT1246200004000 | GOMA POSAPIE CONDUCTOR DER.    | 1     |
|        |                           | 3  | ZT1244100002000 | SILENT-BLOCK CACHAS TANQUE     | 4     |
|        |                           | 4  | ZT1251100328000 | BULON M6X14 8.5X3              | 7     |
|        |                           | 5  | ZT1224100010000 | REMACHE PLASTICO EXPANSIÓN     | 2     |
|        |                           | 6  | ZT1251100120093 | BULÓN M6X12                    | 1     |
|        |                           | 7  | ZT1274100018000 | BUJE SEPARADOR SILENCIADOR     | 1     |
|        |                           | 8  | ZT1251300063093 | GRAMPA M6X11X15                | 7     |
|        |                           | 9  | ZT4046402037063 | CARENADO INF. DER. AZUL        | 1     |
|        |                           | 10 | ZT1226200019100 | POSAPIE CONDUCTOR DERECHO      | 1     |
|        |                           | 11 | ZT1250105136093 | BULON M6X12                    | 1     |
|        |                           | 12 | ZT1276200005000 | SOPORTE POSAPIE CONDUCTOR DER. | 1     |
| 13     |                           |    |                 |                                |       |
| 14     |                           |    |                 |                                |       |
| 15     |                           |    |                 |                                |       |
| 16     |                           |    |                 |                                |       |
| 17     |                           |    |                 |                                |       |
| 18     |                           |    |                 |                                |       |
| 19     |                           |    |                 |                                |       |
| 20     |                           |    |                 |                                |       |
| 21     |                           |    |                 |                                |       |
| 22     |                           |    |                 |                                |       |
| 23     |                           |    |                 |                                |       |
| 24     |                           |    |                 |                                |       |


| FIG. 10 | CUBRE TRABE | Nº              | CÓDIGO                         | DESCRIPCIÓN | CANT. |
|---------|-------------|-----------------|--------------------------------|-------------|-------|
|         | 1           | ZT4136200017000 | CUBRE TRABE                    | 1           |       |
|         | 2           | ZT1224100010000 | REMACHE PLASTICO EXPANSIÓN     | 2           |       |
|         | 3           | ZT4136200008000 | PLACA POSAPIE FRONTAL DER.     | 1           |       |
|         | 4           | ZT1246200006000 | GOMA POSAPIE FRONTAL DER.      | 1           |       |
|         | 5           | ZT1251100328000 | BULON M6X14 8.5X3              | 4           |       |
|         | 6           | ZT1251100101000 | BULON M6X12 (NO STD)           | 8           |       |
|         | 7           | ZT1251300063093 | GRAMPA M6X11X15                | 18          |       |
|         | 8           | ZT1244100002000 | SILENT-BLOCK CACHAS TANQUE     | 12          |       |
|         | 9           | ZT4136200007000 | PLACA POSAPIE FRONTAL IZQ.     | 1           |       |
|         | 10          | ZT1246200007000 | GOMA POSAPIE FRONTAL IZQ.      | 1           |       |
|         | 11          | ZT4046201050021 | CUBRE PIERNA DER. NEGRO        | 1           |       |
|         | 12          | ZT4046201049021 | CUBRE PIERNA IZQ. NEGRO        | 1           |       |
|         | 13          | ZT1244100081000 | SILENT-BLOCK ADHESIVO 10X100X2 | 0.2         |       |
| 14      |             |                 |                                |             |       |
| 15      |             |                 |                                |             |       |
| 16      |             |                 |                                |             |       |
| 17      |             |                 |                                |             |       |
| 18      |             |                 |                                |             |       |
| 19      |             |                 |                                |             |       |
| 20      |             |                 |                                |             |       |
| 21      |             |                 |                                |             |       |
| 22      |             |                 |                                |             |       |
| 23      |             |                 |                                |             |       |
| 24      |             |                 |                                |             |       |

| FIG. 11 | CAJA DE ALMACENAMIENTO | Nº | CÓDIGO           | DESCRIPCIÓN                          | CANT. |
|---------|------------------------|----|------------------|--------------------------------------|-------|
|         |                        | 1  | ZT1251100120093  | BULÓN M6X12                          | 3     |
|         |                        | 2  | ZT1186200008000  | TRABA GUANTERA DER.                  | 1     |
|         |                        | 3  | ZT1276200018000  | SOPORTE CERRADURA GUANTERA DER.      | 1     |
|         |                        | 4  | ZT1251100101000  | BULON M6X12 (NO STD)                 | 4     |
|         |                        | 5  | ZT1156200005000  | CABLE APERTURA GUANTERA              | 1     |
|         |                        | 6  | ZT1224100051000  | PRECINTOS 2.5X10                     | 2     |
|         |                        | 7  | ZT1251200033093  | PARKER ALLEN ST4.2X12                | 3     |
|         |                        | 8  | ZT1186200009000  | COMANDO APERTURA DE GUANTERAS        | 1     |
|         |                        | 9  | ZT1250201052000  | BULON M4X25                          | 3     |
|         |                        | 10 | ZT1276200017000  | SOPORTE CERRADURA GUANTERA IZQ.      | 1     |
|         |                        | 11 | ZT1186400003000  | CERRADURA ELECTRONICA TANQUE         | 1     |
|         |                        | 12 | ZT1186400004000  | CABLE CERRADURA ELECTRONICA GUANTERA | 1     |
|         |                        | 13 | ZT1224100010000  | REMACHE PLASTICO EXPANSIÓN           | 3     |
|         |                        | 14 | ZT1226400124000  | TAPA DE CAJA GUANTERA DERECHA        | 1     |
|         |                        | 15 | ZT1251100328000  | BULON M6X14 8.5X3                    | 4     |
|         |                        | 16 | ZT1226400123000  | GUANTERA DERECHA                     | 1     |
|         |                        | 17 | ZT1226400122000  | GUANTERA IZQUIERDA                   | 1     |
|         |                        | 18 | ZT1251100102000  | BULON M6X16 (NO STD)                 | 2     |
|         |                        | 19 | ZT1246200030007  | TAPON GOMA INF. GUANTERA IZQ.        | 1     |
|         |                        | 20 | ZT1276200038000  | SOPORTE GUANTERAS                    | 1     |
|         |                        | 21 | ZT1186400009000  | USB DOBLE PUERTO TIPO A/C            | 1     |
|         |                        | 22 | ZT12464000054000 | TAPA USB DOBLE PUERTO TIPO A/C       | 1     |
|         | 23                     |    |                  |                                      |       |
|         | 24                     |    |                  |                                      |       |

| FIG. 12 | TAPA GUANTERA | Nº | CÓDIGO          | DESCRIPCIÓN                               | CANT. |
|---------|---------------|----|-----------------|---|-------|
|         |               | 1  | ZT4046202093022 | TAPA GUANTERA IZQ. 350                    | 1     |
|         |               | 2  | ZT1274100090000 | EJE BISAGRA TAPA GUANTERA/TANQUE          | 2     |
|         |               | 3  | ZT1251300063093 | GRAMPA M6X11X15                           | 6     |
|         |               | 4  | ZT1224100014000 | SILENT-BLOCK CACHA SUP TANQUE COMBUSTIBLE | 2     |
|         |               | 5  | ZT1260300026000 | RESORTE DE GUANTERA IZQ,                  | 1     |
|         |               | 6  | ZT1260100215000 | CHAVETA                                   | 2     |
|         |               | 7  | ZT4136200018000 | BASE TAPA GUANTERA IZQ.                   | 1     |
|         |               | 8  | ZT1251100328000 | BULON M6X14 8.5X3                         | 6     |
|         |               | 9  | ZT1246200051000 | SILENT-BLOCK ADHESIVO 6X100X5             | 1     |
|         |               | 10 | ZT4136200019000 | BASE TAPA GUANTERA DER.                   | 1     |
|         |               | 11 | ZT1260300027000 | RESORTE DE GUANTERA DER.                  | 1     |
|         |               | 12 | ZT4046402372022 | TAPA GUANTERA DER. 350                    | 1     |
|         |               | 13 | ZT1210364007000 | CALCO GUANTERA 350                        | 1     |
| 14      |               |    |                 |   |       |
| 15      |               |    |                 |   |       |
| 16      |               |    |                 |   |       |
| 17      |               |    |                 |   |       |
| 18      |               |    |                 |   |       |
| 19      |               |    |                 |   |       |
| 20      |               |    |                 |   |       |
| 21      |               |    |                 |   |       |
| 22      |               |    |                 |   |       |
| 23      |               |    |                 |   |       |
| 24      |               |    |                 |   |       |

| FIG. 13 | CUBRE TANQUE | Nº | CÓDIGO          | DESCRIPCIÓN                               | CANT. |
|---------|--------------|----|-----------------|---|-------|
|         |              | 1  | ZT4046202062063 | CUBRE TANQUE AZUL 350                     | 1     |
|         |              | 2  | ZT1251100102000 | BULON M6X16 (NO STD)                      | 1     |
|         |              | 3  | ZT1251300063093 | GRAMPA M6X11X15                           | 1     |
|         |              | 4  | ZT1251100328000 | BULON M6X14 8.5X3                         | 2     |
|         |              | 5  | ZT1240300007000 | GOMA SILENT-BLOCK BATERÍA                 | 2     |
|         |              | 6  | ZT1244100081000 | SILENT-BLOCK ADHESIVO 10X100X2            | 1     |
|         |              | 7  | ZT1276200012000 | EJE BISAGRA TAPA GUANTERA/TANQUE 350      | 1     |
|         |              | 8  | ZT1224100014000 | SILENT-BLOCK CACHA SUP TANQUE COMBUSTIBLE | 1     |
|         |              | 9  | ZT1260300028000 | RESORTE TAPA TANQUE                       | 1     |
|         |              | 10 | ZT1260100215000 | CHAVETA                                   | 1     |
|         |              | 11 | ZT4046201093063 | TAPA TANQUE COMBUSTIBLE AZUL              | 1     |
|         |              | 12 | ZT4136200006000 | SOPORTE TAPA TANQUE COMBUSTIBLE           | 1     |
|         |              | 13 | ZT1251200033093 | PARKER ALLEN ST4.2X12                     | 2     |
|         |              | 14 | ZT1184200002000 | CERRADURA ELECTRONICA TANQUE COMBUSTIBLE  | 1     |
| 15      |              |    |                 |   |       |
| 16      |              |    |                 |   |       |
| 17      |              |    |                 |   |       |
| 18      |              |    |                 |   |       |
| 19      |              |    |                 |   |       |
| 20      |              |    |                 |   |       |
| 21      |              |    |                 |   |       |
| 22      |              |    |                 |   |       |
| 23      |              |    |                 |   |       |
| 24      |              |    |                 |   |       |

| FIG. 14 | CACHA CENTRAL | Nº | CÓDIGO          | DESCRIPCIÓN                     | CANT. |
|---------|---------------|----|-----------------|---------------------------------|-------|
|         |               | 1  | ZT1251100328000 | BULON M6X14 8.5X3               | 4     |
|         |               | 2  | ZT1244100002000 | SILENT-BLOCK CACHAS TANQUE      | 4     |
|         |               | 3  | ZT4046402357063 | CACHA CENTRAL IZQ. / DER.       | 1     |
|         |               | 4  | ZT1246200026000 | SILENT-BLOCK IZQ. CACHA CENTRAL | 1     |
|         |               | 5  | ZT1246200027000 | SILENT-BLOCK DER- CACHA CENTRAL | 1     |
|         |               | 6  | ZT4046402358063 | CACHA CENTRAL DER. AZUL 350     | 1     |
|         |               | 7  |                 |                                 |       |
|         |               | 8  |                 |                                 |       |
|         |               | 9  |                 |                                 |       |
|         |               | 10 |                 |                                 |       |
|         |               | 11 |                 |                                 |       |
|         |               | 12 |                 |                                 |       |
|         |               | 13 |                 |                                 |       |
|         |               | 14 |                 |                                 |       |
|         |               | 15 |                 |                                 |       |
|         |               | 16 |                 |                                 |       |
|         |               | 17 |                 |                                 |       |
|         |               | 18 |                 |                                 |       |
|         |               | 19 |                 |                                 |       |
|         |               | 20 |                 |                                 |       |
|         |               | 21 |                 |                                 |       |
|         |               | 22 |                 |                                 |       |
|         |               | 23 |                 |                                 |       |
|         |               | 24 |                 |                                 |       |

| FIG. 15   | CARENADO LATERAL | Nº | CÓDIGO          | DESCRIPCIÓN                 | CANT. |  |
|---|------------------|----|-----------------|-----------------------------|-------|--|
|  |                  | 1  | ZT4046201045021 | CARENADO LATERAL IZQ. NEGRO | 1     |  |
|   |                  | 2  | ZT4046201046021 | CARENADO LATERAL DER. NEGRO | 1     |  |
|   |                  | 3  | ZT1251100328000 | BULON M6X14 8.5X3           | 2     |  |
|   |                  | 4  |                 |                             |       |  |
|   |                  | 5  |                 |                             |       |  |
|   |                  | 6  |                 |                             |       |  |
|   |                  | 7  |                 |                             |       |  |
|   |                  | 8  |                 |                             |       |  |
|   |                  | 9  |                 |                             |       |  |
|   |                  | 10 |                 |                             |       |  |
|   |                  | 11 |                 |                             |       |  |
|   |                  | 12 |                 |                             |       |  |
|   |                  | 13 |                 |                             |       |  |
|   |                  | 14 |                 |                             |       |  |
|   |                  | 15 |                 |                             |       |  |
|   |                  | 16 |                 |                             |       |  |
|   |                  | 17 |                 |                             |       |  |
|   |                  | 18 |                 |                             |       |  |
|   |                  | 19 |                 |                             |       |  |
|   |                  | 20 |                 |                             |       |  |
|   |                  | 21 |                 |                             |       |  |
|   |                  | 22 |                 |                             |       |  |
|   |                  | 23 |                 |                             |       |  |
|   |                  | 24 |                 |                             |       |  |

| FIG. 16 | MANIJA ELEVACIÓN ACOMPAÑANTE | Nº | CÓDIGO          | DESCRIPCIÓN                   | CANT. |
|---------|------------------------------|----|-----------------|-------------------------------|-------|
|         |                              | 1  | ZT4116200003051 | MANIJA ELEVACIÓN ACOMPAÑANTE  | 1     |
|         |                              | 2  | ZT1250105148093 | BULON M6X25                   | 5     |
|         |                              | 3  | ZT1246200025000 | CUBRE BULON MANIJA M6         | 2     |
|         |                              | 4  | ZT1251100102000 | BULON M6X16 (NO STD)          | 2     |
|         |                              | 5  | ZT1224100010000 | REMACHE PLASTICO EXPANSIÓN    | 2     |
|         |                              | 6  | ZT1246200023000 | CUBRE BULON MANIJA M8         | 5     |
|         |                              | 7  | ZT1246200024000 | TAPON MANIJA ELEVACIÓN        | 4     |
|         |                              | 8  | ZT1274100057095 | BUJE 6.2X8.5X3.5 + 14X1.5     | 5     |
|         |                              | 9  | ZT1244100052000 | ARANDELA GOMA 8.5X14X1        | 5     |
|         |                              | 10 | ZT1226200017000 | PLACA MANIJA ELEVACION ACOMP. | 1     |
|         |                              | 11 | ZT1246200002000 | GOMA IZQ. MANIJA ELEVACIÓN    | 1     |
|         |                              | 12 | ZT1246200001000 | GOMA DER. MANIJA ELEVACIÓN    | 1     |
|         |                              | 13 | ZT1251100101000 | BULON M6X12 (NO STD)          | 9     |
| 14      |                              |    |                 |                               |       |
| 15      |                              |    |                 |                               |       |
| 16      |                              |    |                 |                               |       |
| 17      |                              |    |                 |                               |       |
| 18      |                              |    |                 |                               |       |
| 19      |                              |    |                 |                               |       |
| 20      |                              |    |                 |                               |       |
| 21      |                              |    |                 |                               |       |
| 22      |                              |    |                 |                               |       |
| 23      |                              |    |                 |                               |       |
| 24      |                              |    |                 |                               |       |

| FIG. 17 | FARO / CACHA TRASERA | Nº | CÓDIGO          | DESCRIPCIÓN                    | CANT. |
|---------|----------------------|----|-----------------|--------------------------------|-------|
|         |                      | 1  | ZT1251100328000 | BULON M6X14 8.5X3              | 6     |
|         |                      | 2  | ZT1224100010000 | REMACHE PLASTICO EXPANSIÓN     | 12    |
|         |                      | 3  | ZT4046402351063 | CACHA IZQ. TRASERA AZUL 350    | 1     |
|         |                      | 4  | ZT1244100002000 | SILENT-BLOCK CACHAS TANQUE     | 2     |
|         |                      | 5  | ZT1251300063093 | GRAMPA M6X11X15                | 6     |
|         |                      | 6  | ZT4046402353063 | CACHA DER. TRASERA AZUL 350    | 1     |
|         |                      | 7  | ZT1251200033093 | PARKER ALLEN ST4.2X12          | 2     |
|         |                      | 8  | ZT1226200007000 | SOPORTE CACHA TRASERA IZQ.     | 1     |
|         |                      | 9  | ZT1226200004000 | MOLDURA FARO TRASERO           | 1     |
|         |                      | 10 | ZT1251900058000 | SILENT-BLOCK 25X25X3.5         | 2     |
|         |                      | 11 | ZT1176200012000 | FARO TRASERO                   | 1     |
|         |                      | 12 | ZT1226200006000 | SOPORTE CACHA TRASERA DER.     | 1     |
|         |                      | 13 | ZT1241200062000 | GOMA CON ADHESIVO (50X15X2)    | 0.5   |
|         |                      | 14 | ZT1244100081000 | SILENT-BLOCK ADHESIVO 10X100X2 | 1     |
|         |                      | 15 | ZT1226400188000 | ABROJO DE ANTENA EXTERNA       | 1     |
|         | 16                   |    |                 |                                |       |
|         | 17                   |    |                 |                                |       |
|         | 18                   |    |                 |                                |       |
|         | 19                   |    |                 |                                |       |
|         | 20                   |    |                 |                                |       |
|         | 21                   |    |                 |                                |       |
|         | 22                   |    |                 |                                |       |
|         | 23                   |    |                 |                                |       |
|         | 24                   |    |                 |                                |       |

| FIG. 18 | ASIENTO | Nº | CÓDIGO          | DESCRIPCIÓN               | CANT. |
|---------|---------|----|-----------------|---------------------------|-------|
|         |         | 1  | ZT4120200006000 | ASIENTO M350              | 1     |
|         |         | 2  | ZT1246400089021 | TOPE SILENT-BLOCK ASIENTO | 4     |
|         |         | 3  | ZT1244200091000 | SILENT-BLOCK ASIENTO      | 4     |
|         |         | 4  | ZT1251200050094 | BULON PARKER 3.9X12       | 2     |
|         |         | 5  | ZT1251200033093 | PARKER ALLEN ST4.2X12     | 2     |
|         |         | 6  | ZT4046201031021 | FUNDA DECORATIVA ASIENTO  | 1     |
|         |         | 7  | ZT1250303010093 | TUERCA M6                 | 3     |
|         |         | 8  | ZT1250303011093 | TUERCA M8                 | 1     |
|         |         | 9  | ZT1276400008000 | BISAGRA DE ASIENTO        | 1     |
|         |         | 10 | ZT1226200039000 | BUJE BISAGRA ASIENTO      | 2     |
|         |         | 11 | ZT1250104070093 | BULON M8X120              | 1     |
|         |         | 12 | ZT1246200003000 | TOPE GOMA BISAGRA ASIENTO | 2     |
|         |         | 13 | ZT1260300038000 | RESORTE BISAGRA ASIENTO   | 1     |
| 14      |         |    |                 |                           |       |
| 15      |         |    |                 |                           |       |
| 16      |         |    |                 |                           |       |
| 17      |         |    |                 |                           |       |
| 18      |         |    |                 |                           |       |
| 19      |         |    |                 |                           |       |
| 20      |         |    |                 |                           |       |
| 21      |         |    |                 |                           |       |
| 22      |         |    |                 |                           |       |
| 23      |         |    |                 |                           |       |
| 24      |         |    |                 |                           |       |

| FIG. 19 | PORTA CASCO | Nº              | CÓDIGO                           | DESCRIPCIÓN | CANT. |
|---------|-------------|-----------------|----------------------------------|-------------|-------|
|         | 1           | ZT1246200025000 | CUBRE BULON MANIJA M6            | 2           |       |
|         | 2           | ZT1226400115000 | CAJA PORTA CASCO                 | 1           |       |
|         | 3           | ZT1224100010000 | REMACHE PLASTICO EXPANSIÓN       | 3           |       |
|         | 4           | ZT1246200015000 | GOMA PROTECTOR MOTOR             | 1           |       |
|         | 5           | ZT1240300157000 | SILENT-BLOCK ADHESIVO 50X30X2    | 5           |       |
|         | 6           | ZT1176200010000 | FARO CAJA PORTA CASCO            | 1           |       |
|         | 7           | ZT1226400149000 | CAJA PORTA BATERIA               | 1           |       |
|         | 8           | ZT1186200002000 | BATERIA DE GEL M310              | 1           |       |
|         | 9           | ZT1244200111000 | CINTO FIJACION DE BATERÍA        | 1           |       |
|         | 10          | ZT1251100328000 | BULON M6X14 8.5X3                | 2           |       |
|         | 11          | ZT1251100101000 | BULON M6X12 (NO STD)             | 4           |       |
|         | 12          | ZT1246400057000 | BURLETE CAJA PORTA CASCO         | 1           |       |
|         | 13          | ZT1246200072000 | GOMA BASE CAJA PORTA CASCO       | 1           |       |
|         | 14          | ZT1246200029007 | TAPON GOMA IZQ. GUANTERA         | 1           |       |
|         | 15          | ZT1276200041000 | KIT HERRAMIENTAS M310            | 1           |       |
|         | 16          | ZT1186700004000 | CARGADOR BATERIA GEL E5 (EUROPA) | 1           |       |
|         | 17          | ZT1186400036000 | CABLE ADAPTADOR DE CARGADOR      | 1           |       |
|         | 18          | ZT1226400197000 | ABROJO BASE PORTA CASCO          | 1           |       |
| 19      |             |                 |                                  |             |       |
| 20      |             |                 |                                  |             |       |
| 21      |             |                 |                                  |             |       |
| 22      |             |                 |                                  |             |       |
| 23      |             |                 |                                  |             |       |
| 24      |             |                 |                                  |             |       |

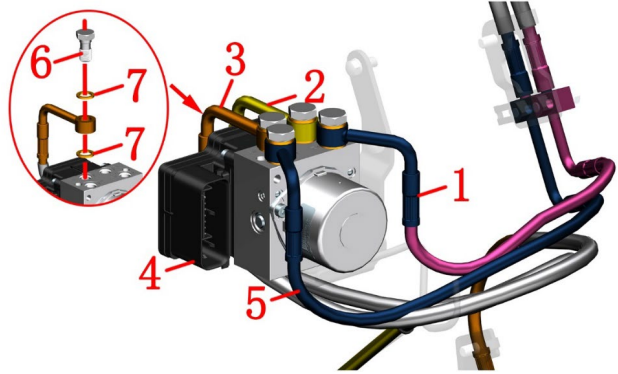
| FIG. 20 | GUARDABARRO TRASERO | Nº | CÓDIGO          | DESCRIPCIÓN                       | CANT. |
|---------|---------------------|----|-----------------|-----------------------------------|-------|
|         |                     | 1  | ZT1226200005000 | GUARDABARRO TRASERO               | 1     |
|         |                     | 2  | ZT1244200047000 | GOMA CAJA COMPONENTES ELECTRICOS  | 1     |
|         |                     | 3  | ZT1251100328000 | BULON M6X14 8.5X3                 | 4     |
|         |                     | 4  | ZT1224100010000 | REMACHE PLASTICO EXPANSIÓN        | 2     |
|         |                     | 5  | ZT1244100006000 | GOMA TOPE PATENTE                 | 1     |
|         |                     | 6  | ZT1251100102000 | BULON M6X16 (NO STD)              | 4     |
|         |                     | 7  | ZT1176200008000 | FARO GIRO DER. TRASERO            | 1     |
|         |                     | 8  | ZT1170300105000 | FARO PATENTE                      | 1     |
|         |                     | 9  | ZT1174100002000 | OJO GATO TRASERO                  | 1     |
|         |                     | 10 | ZT1244100002000 | SILENT-BLOCK CACHAS TANQUE        | 1     |
|         |                     | 11 | ZT1226200003000 | GUARDABARRO PORTA PATENTE         | 1     |
|         |                     | 12 | ZT1176200007000 | FARO GIRO IZQ. TRASERO            | 1     |
|         |                     | 13 | ZT1251200033093 | PARKER ALLEN ST4.2X12             | 4     |
|         |                     | 14 | ZT1244100081000 | SILENT-BLOCK ADHESIVO 10X100X2    | 1     |
|         |                     | 15 | ZT1251300063093 | GRAMPA M6X11X15                   | 6     |
|         |                     | 16 | ZT1250502010093 | ARANDELA ESP. 6.1                 | 1     |
|         |                     | 17 | ZT1251100101000 | BULON M6X12 (NO STD)              | 2     |
|         |                     | 18 | ZT1210201362000 | PLACA PUBLICITARIA TRASERA ZONTES | 1     |
|         |                     | 19 | ZT1250303010093 | TUERCA M6                         | 2     |
|         |                     | 20 |                 |                                   |       |
|         |                     | 21 |                 |                                   |       |
|         |                     | 22 |                 |                                   |       |
|         |                     | 23 |                 |                                   |       |
|         |                     | 24 |                 |                                   |       |

| FIG. 21 | MANUBRIO | Nº              | CÓDIGO                         | DESCRIPCIÓN                               | CANT. |
|---------|----------|-----------------|--------------------------------|---|-------|
|         |          | 1               | ZT1136400016000                | PUNTERA MANUBRIO NEGRO MATE               | 2     |
|         |          |                 | ZT1136200005000                | PUNTERA MANUBRIO                          | 2     |
|         |          | 2               | ZT1244100041000                | PUÑO IZQUIERDO                            | 1     |
|         |          | 3               | ZT1186200025000                | COMANDO LUCES IZQUIERDO M1                | 1     |
|         |          | 4               | ZT1184200181000                | BRIDA FIJ. LEVA FRENO/COMANDO IZQ.TFT     | 1     |
|         |          | 5               | ZT4096200012000                | MANUBRIO M310                             | 1     |
|         |          | 6               | ZT1250205031091                | BULON M6X30                               | 4     |
|         |          | 7               | ZT1184300018000                | BRIDA FIJ. BOMBA FRENO DEL. GRIS          | 1     |
|         |          |                 | ZT1186200012000                | BRIDA FIJ. LEVA FRENO/COMANDO DER.TFT 350 | 1     |
|         |          | 8               | ZT1184200185000                | COMANDO LUCES DERECHO R1                  | 1     |
|         |          | 9               | ZT1244100042000                | PUÑO ACELERADOR                           | 1     |
|         |          | 10              | ZT1156400007000                | CABLE ACELERADOR CIERRA D350 2            | 1     |
|         |          |                 | ZT1156400005000                | CABLE ACELERADOR CIERRA D350              | 1     |
|         |          | 11              | ZT1156400006000                | CABLE ACELERADOR ABRE D350 2              | 1     |
|         |          |                 | ZT1156400004000                | CABLE ACELERADOR ABRE D350                | 1     |
|         |          | 12              | ZT1251100219000                | BULÓN CABEZA ESFÉRICA M5X30               | 2     |
|         |          | 13              | ZT4046201069021                | TAPA MANUBRIO LOGO ZONTES                 | 1     |
|         |          | 14              | ZT1226200033000                | CONTRA MASCARIN                           | 1     |
|         |          | 15              | ZT4136200024000                | MASCARIN                                  | 1     |
|         | 16       | ZT1250204031093 | BULON PARKER 4.2X12            | 2   |       |
|         |          | ZT1251200050094 | BULON PARKER 3.9X12            | 2   |       |
|         | 17       | ZT1240300007000 | GOMA SILENT-BLOCK BATERÍA      | 1   |       |
|         | 18       | ZT1244100081000 | SILENT-BLOCK ADHESIVO 10X100X2 | 0.1                                       |       |
|         | 19       | ZT1251100101000 | BULON M6X12 (NO STD)           | 1   |       |
|         |          | ZT1251100328000 | BULON M6X14 8.5X3              | 1   |       |

| FIG. 22 | MANUBRIO | Nº | CÓDIGO          | DESCRIPCIÓN                               | CANT. |
|---------|----------|----|-----------------|---|-------|
|         |          | 1  | ZT1250205034093 | BULON M8X16                               | 6     |
|         |          | 2  | ZT1136400008022 | BRIDA SUPERIOR MANUBRIO NEGRO MATE        | 2     |
|         |          | 3  | ZT1130400010000 | BRIDA SUPERIOR MANUBRIO                   | 2     |
|         |          | 4  | ZT1020864010000 | BRIDA INFERIOR MANUBRIO                   | 1     |
|         |          | 5  | ZT1251300088000 | TUERCA SUP. CAÑO VELA                     | 1     |
|         |          | 6  | ZT1251500100000 | ARANDELA SUP CAÑO VELA                    | 1     |
|         |          | 7  | ZT4096400021022 | CABEZAL HORQUILLA NEGRO MATE              | 1     |
|         |          | 8  | ZT1251700168000 | BUJE 10X13X41                             | 2     |
|         |          | 9  | ZT1246400049000 | BUJE GOMA FIJACIÓN BRIDA MANUBRIO V2      | 4     |
|         |          | 10 | ZT1274200018000 | ARANDELA FIJACIÓN BRIDA INFERIOR MANUBRIO | 4     |
|         |          | 11 | ZT1250105280000 | BULON M10X60                              | 2     |
|         |          | 12 |                 |   |       |
|         |          | 13 |                 |   |       |
|         |          | 14 |                 |   |       |
|         |          | 15 |                 |   |       |
|         |          | 16 |                 |   |       |
|         |          | 17 |                 |   |       |
|         |          | 18 |                 |   |       |
|         |          | 19 |                 |   |       |
|         |          | 20 |                 |   |       |
|         |          | 21 |                 |   |       |
|         |          | 22 |                 |   |       |
|         |          | 23 |                 |   |       |
|         |          | 24 |                 |   |       |

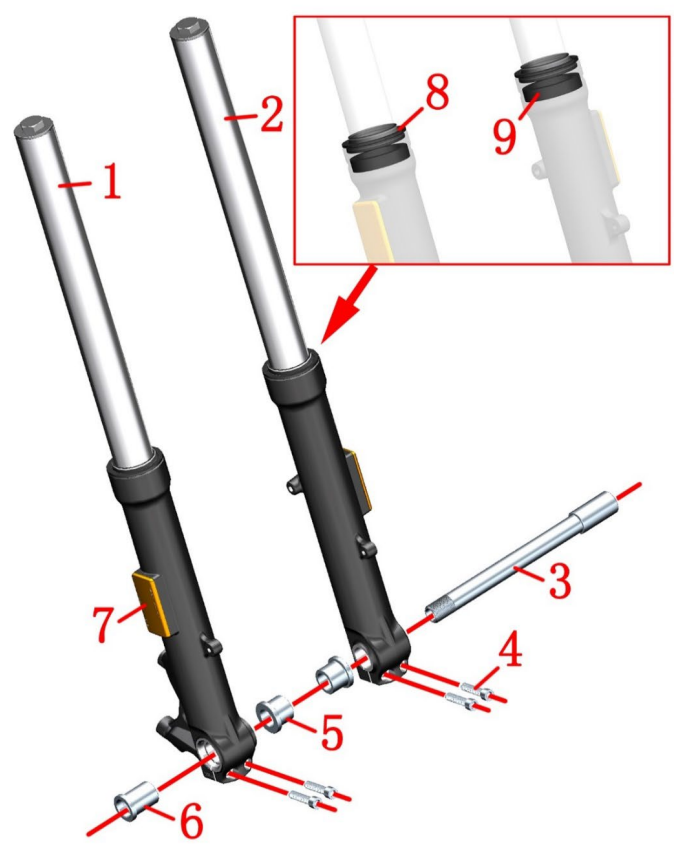
| FIG. 23 | SISTEMA DE FRENOS | Nº | CÓDIGO          | DESCRIPCIÓN                            | CANT. |  |
|---------|-------------------|----|-----------------|--|-------|--|
|         |                   | 1  | ZT1276400055000 | SOPORTE FLEXIBLE FRENO TRASERO FRONTAL | 1     |  |
|         |                   | 2  | ZT1251100101000 | BULON M6X12 (NO STD)                   | 6     |  |
|         |                   | 3  | ZT1270300273000 | PASACABLE FLEX. L=73                   | 1     |  |
|         |                   | 4  | ZT1276200043000 | ABRAZADERA FLEXIBLE 57MM               | 1     |  |
|         |                   | 5  | ZT1181200118000 | SENSOR VELOCIDAD ABS (A)               | 2     |  |
|         |                   | 6  | ZT1276400056000 | SOPORTE FORNTAL FLEXIBLE FRENO         | 1     |  |
|         |                   | 7  | ZT1251100061093 | BULON M6X22                            | 3     |  |
|         |                   | 8  | ZT1224100044000 | GRAMPA CABLE SENSOR VELOCIDAD          | 8     |  |
|         |                   | 9  | ZT1276400053000 | PASACABLE FLEXIBLE FRENO DELANTERO     | 1     |  |
|         |                   | 10 | ZT1250205031091 | BULON M6X30                            | 1     |  |
|         |                   | 11 | ZT1250503039000 | ARANDELA 6X1                           | 1     |  |
|         |                   | 12 | ZT1251100303093 | BULON ALLEN M10X1.5X60                 | 2     |  |
|         |                   | 13 | ZT1251100102000 | BULON M6X16 (NO STD)                   | 4     |  |
|         |                   | 14 | ZT1274100007000 | BUJE                                   | 2     |  |
|         |                   | 15 | ZT1276400050000 | SOPORTE UNIDAD DE CONTROL ABS          | 1     |  |
|         |                   | 16 | ZT1250104006097 | BULON M6X12                            | 2     |  |
|         |                   | 17 | ZT1244100004000 | GOMA SILENT-BLOCK                      | 2     |  |
|         |                   | 18 | ZT1251100080094 | BULON M8X37                            | 2     |  |
|         |                   | 19 | ZT1224200003000 | GRAMPA FLEXIBLE FRENO TRASERO          | 3     |  |
|         |                   | 20 | ZT1276200023000 | SOPORTE FLEXIBLE FRENO TRASERO         | 1     |  |
|         |                   | 21 |                 |  |       |  |
|         |                   | 22 |                 |  |       |  |
|         |                   | 23 |                 |  |       |  |
|         |                   | 24 |                 |  |       |  |

| FIG. 24 | SISTEMA DE FRENOS | Nº | CÓDIGO          | DESCRIPCIÓN                | CANT. |
|---------|-------------------|----|-----------------|----------------------------|-------|
|         |                   | 1  |                 |                            |       |
|         |                   | 2  |                 |                            |       |
|         |                   | 3  |                 |                            |       |
|         |                   | 4  |                 |                            |       |
|         |                   | 5  |                 |                            |       |
|         |                   | 6  | ZT1251100248000 | BULÓN HEXAGONAL M10X20     | 4     |
|         |                   | 7  | ZT1251513013000 | ARANDELA COBRE 10.2X15X1.5 | 8     |
|         |                   | 8  | ZT1190100408051 | ESPEJO IZQUIERDO GRIS      | 1     |
|         |                   | 9  | ZT1190100409051 | ESPEJO DERECHO GRIS        | 1     |
|         |                   | 10 |                 |                            |       |
|         |                   | 11 |                 |                            |       |
|         |                   | 12 |                 |                            |       |
|         |                   | 13 |                 |                            |       |
|         |                   | 14 |                 |                            |       |
|         |                   | 15 |                 |                            |       |
|         |                   | 16 |                 |                            |       |
|         |                   | 17 |                 |                            |       |
|         |                   | 18 |                 |                            |       |
|         |                   | 19 |                 |                            |       |
|         |                   | 20 |                 |                            |       |
|         |                   | 21 |                 |                            |       |
|         |                   | 22 |                 |                            |       |
|         |                   | 23 |                 |                            |       |
|         |                   | 24 |                 |                            |       |

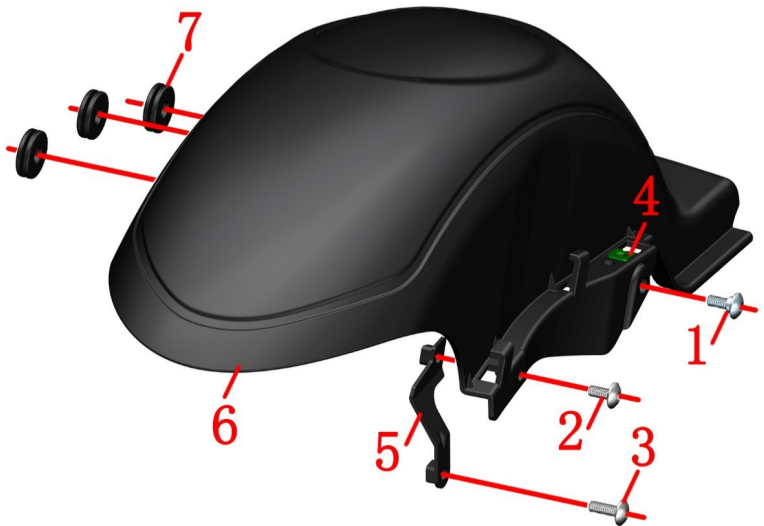


| FIG. 25 | LEVA / BOMBA FRENO | Nº              | CÓDIGO                                | DESCRIPCIÓN | CANT. |
|---------|--------------------|-----------------|---------------------------------------|-------------|-------|
|         | 1                  | ZT1100100833000 | LEVA FRENO DELANTERO GRIS             | 1           |       |
|         | 2                  | ZT1100100831000 | BOMBA FRENO DELANTERO GRIS            | 1           |       |
|         | 3                  | ZT1251100112000 | BULON FLEXIBLE FRENO M10X1X22         | 3           |       |
|         | 4                  | ZT1251513013000 | ARANDELA COBRE 10.2X15X1.5            | 8           |       |
|         | 5                  | ZT1100300120051 | BOMBA FRENO TRASERO GRIS              | 1           |       |
|         | 6                  | ZT1100300132051 | LEVA FRENO TRASERO GRIS               | 1           |       |
|         | 7                  | ZT1100100583000 | BULBO FRENO DELANTERO                 | 1           |       |
|         | 8                  | ZT1250205131000 | BULON M4X10                           | 1           |       |
|         | 9                  | ZT1276400052000 | FRENO DE MANO TRASERO                 | 1           |       |
|         | 10                 | ZT1251100330000 | BULON LEVA FRENO TRASERO M6X14-8X23.8 | 1           |       |
|         | 11                 | ZT1100300130000 | BULBO FRENO TRASERO                   | 1           |       |
|         | 12                 | ZT1100100482000 | PASTILLA FRENO TRASERA JB F80         | 1           |       |
|         | 14                 | ZT1100100936000 | TAPON GOMA CALIPER V2                 | 1           |       |
|         | 15                 | ZT1100100895000 | VAVULA PURGA CALIPER V2               | 1           |       |
|         | 16                 | ZT1251100307000 | BULON FLEXIBLE FRENO M10X1X22         | 1           |       |
|         | 17                 | ZT1100100827000 | PASTILLA FRENO DELANTERO 104HH        | 1           |       |
|         | 19                 | ZT1100300134000 | SOPORTE CALIPER TRASERO GRIS          | 1           |       |
|         |                    |                 |                                       |             |       |
|         |                    |                 |                                       |             |       |
|         |                    |                 |                                       |             |       |
|         |                    |                 |                                       |             |       |
|         |                    |                 |                                       |             |       |
|         |                    |                 |                                       |             |       |

| FIG. 26 | CRUCETA CON CAÑO VELA | Nº | CÓDIGO          | DESCRIPCIÓN                      | CANT. |
|---------|-----------------------|----|-----------------|----------------------------------|-------|
|         |                       | 1  | ZT1134100007000 | JUNTA BLOQUEO TUERCA CAÑO VELA   | 1     |
|         |                       | 2  | ZT1251300046093 | TUERCA CAÑO VELA M24X1           | 2     |
|         |                       | 3  | ZT1244100015000 | JUNTA DE TUERCA AJUSTE           | 1     |
|         |                       | 4  | ZT1244300014000 | GUARDAPOLVO SUPERIOR CAÑO VELA   | 1     |
|         |                       | 5  | ZT1130900024000 | PISTA SUPEROR                    | 1     |
|         |                       | 6  | ZT1130900022000 | ANILLO ESFERAS                   | 1     |
|         |                       | 7  | ZT1130900026000 | CUBETA CUADRO                    | 1     |
|         |                       | 8  | ZT1136200003000 | CUBETA INF. RODAMIENTO CAÑO VELA | 1     |
|         |                       | 9  | ZT4096400020022 | CRUCETA CON CAÑO VELA NEGRO MATE | 1     |
|         |                       | 10 | ZT1250205034093 | BULON M8X16                      | 4     |
|         |                       | 11 | ZT1136200002000 | RODAMIENTO INF. CAÑO VELA        | 1     |
|         |                       | 12 | ZT1246200044000 | GUARDAPOLVO INF. CAÑO VELA       | 1     |
|         |                       | 13 | ZT4096100001000 | KIT CUBETAS DIRECCIÓN M350       | 1     |
| 14      |                       |    |                 |                                  |       |
| 15      |                       |    |                 |                                  |       |
| 16      |                       |    |                 |                                  |       |
| 17      |                       |    |                 |                                  |       |
| 18      |                       |    |                 |                                  |       |
| 19      |                       |    |                 |                                  |       |
| 20      |                       |    |                 |                                  |       |
| 21      |                       |    |                 |                                  |       |
| 22      |                       |    |                 |                                  |       |
| 23      |                       |    |                 |                                  |       |
| 24      |                       |    |                 |                                  |       |

| FIG. 27   | PIERNA HORQUILLA | Nº | CÓDIGO          | DESCRIPCIÓN                      | CANT. |
|---|------------------|----|-----------------|----------------------------------|-------|
|  |                  | 1  | ZT1116400011000 | PIERNA HORQUILLA IZQUIERDA       | 1     |
|   |                  | 2  | ZT1116400012000 | PIERNA HORQUILLA DERECHA         | 1     |
|   |                  | 3  | ZT1094100063000 | EJE DELANTERO M20X243            | 1     |
|   |                  | 4  | ZT1250205023000 | BULON M8X35 ALLEN                | 4     |
|   |                  | 5  | ZT1094100036000 | BUJE DER. EJE DELANTERO          | 2     |
|   |                  | 6  | ZT1094100037000 | BUJE FIJ. DER. EJE DELANTERO     | 1     |
|   |                  | 7  | ZT1174100001000 | OJO GATO HORQUILLAS              | 2     |
|   |                  | 8  | ZT1244200123000 | GUARDAPOLVO HORQUILLA 37X50.3X13 | 2     |
|   |                  | 9  | ZT1244200035000 | RETEN HORQUILLA DELANTERA        | 2     |
|   |                  | 10 |                 |                                  |       |
|   |                  | 11 |                 |                                  |       |
|   |                  | 12 |                 |                                  |       |
|   |                  | 13 |                 |                                  |       |
|   |                  | 14 |                 |                                  |       |
|   |                  | 15 |                 |                                  |       |
|   |                  | 16 |                 |                                  |       |
|   |                  | 17 |                 |                                  |       |
|   |                  | 18 |                 |                                  |       |
|   |                  | 19 |                 |                                  |       |
|   |                  | 20 |                 |                                  |       |
|   |                  | 21 |                 |                                  |       |
|   |                  | 22 |                 |                                  |       |
|   |                  | 23 |                 |                                  |       |
|   |                  | 24 |                 |                                  |       |

| FIG. 28 | LLANTA DELANTERA | Nº | CÓDIGO          | DESCRIPCIÓN                                 | CANT. |
|---------|------------------|----|-----------------|---|-------|
|         |                  | 1  | ZT1230300057100 | CUBIERTA 120/70 R15 - CM576 56S TL E4 IMARK | 1     |
|         |                  | 2  | ZT1096400002035 | LLANTA DELANTERA DORADO R15                 | 1     |
|         |                  | 3  | ZT1276400011000 | DISCO SENSOR ABS 56 T                       | 1     |
|         |                  | 4  | ZT1100300097000 | DISCO FRENO DELANTERO 265X5                 | 1     |
|         |                  | 5  | ZT1250402002000 | REMACHE 3.2X9                               | 5     |
|         |                  | 6  | ZT1251100117093 | BULON M8X25                                 | 5     |
|         |                  | 7  | ZT1100300138000 | KIT DISCO FRENO DELANTERO-ABS               | 1     |
|         |                  | 8  | ZT1184300056000 | SENSOR TPM M8 EIBOW/120°                    | 1     |
|         |                  | 9  | ZT1094300016000 | VALVULA INDEPENDIENTE M8 EIBOW/120°         | 1     |
|         |                  | 10 | ZT1224100044000 | GRAMPA CABLE SENSOR VELOCIDAD               | 4     |
|         |                  | 11 | ZT1251100120093 | BULÓN M6X12                                 | 1     |
|         |                  | 12 | ZT1181200118000 | SENSOR VELOCIDAD ABS (A)                    | 1     |
|         |                  | 13 | ZT1244200135000 | RETEN 28X42X7                               | 2     |
|         |                  | 14 | ZT1250601119000 | RODAMIENTO 6004-2RS-C3                      | 2     |
|         |                  | 15 | ZT1224100051000 | PRECINTOS 2.5X10                            | 1     |
|         |                  | 16 |                 |   |       |
|         |                  | 17 |                 |   |       |
|         |                  | 18 |                 |   |       |
|         |                  | 19 |                 |   |       |
|         |                  | 20 |                 |   |       |
|         |                  | 21 |                 |   |       |
|         |                  | 22 |                 |   |       |
|         |                  | 23 |                 |   |       |
|         |                  | 24 |                 |   |       |

| FIG. 29   | GUARDABARRO INTERIOR TRASERO | Nº | CÓDIGO          | DESCRIPCIÓN                  | CANT. |
|---|------------------------------|----|-----------------|------------------------------|-------|
|  |                              | 1  | ZT1251100328000 | BULON M6X14 8.5X3            | 1     |
|   |                              | 2  | ZT1251100101000 | BULON M6X12 (NO STD)         | 1     |
|   |                              | 3  | ZT1251100102000 | BULON M6X16 (NO STD)         | 1     |
|   |                              | 4  | ZT1251300063093 | GRAMPA M6X11X15              | 1     |
|   |                              | 5  | ZT1276400078000 | SOPORTE GUARDABARRO INTERIOR | 1     |
|   |                              | 6  | ZT1226400181000 | GUARDABARRO INTERIOR TRASERO | 1     |
|   |                              | 7  | ZT1244100002000 | SILENT-BLOCK CACHAS TANQUE   | 3     |
|   |                              | 8  |                 |                              |       |
|   |                              | 9  |                 |                              |       |
|   |                              | 10 |                 |                              |       |
|   |                              | 11 |                 |                              |       |
|   |                              | 12 |                 |                              |       |
|   |                              | 13 |                 |                              |       |
|   |                              | 14 |                 |                              |       |
|   |                              | 15 |                 |                              |       |
|   |                              | 16 |                 |                              |       |
|   |                              | 17 |                 |                              |       |
|   |                              | 18 |                 |                              |       |
|   |                              | 19 |                 |                              |       |
|   |                              | 20 |                 |                              |       |
|   |                              | 21 |                 |                              |       |
|   |                              | 22 |                 |                              |       |
|   |                              | 23 |                 |                              |       |
|   |                              | 24 |                 |                              |       |

| FIG. 30 | AMORTIGUADOR TRASERO | Nº | CÓDIGO          | DESCRIPCIÓN                      | CANT. |
|---------|----------------------|----|-----------------|----------------------------------|-------|
|         |                      | 1  | ZT1116400007000 | AMORTIGUADOR TRASERO M350        | 2     |
|         |                      | 2  | ZT1246400065000 | CAPUCHON DE AMORTIGUADOR TRAS. M | 2     |
|         |                      | 3  | ZT1251300057093 | TUERCA M10X1.5                   | 2     |
|         |                      | 4  | ZT1251100291000 | BULON M10X1.5X55                 | 2     |
|         |                      | 5  | ZT1250106071093 | BULON M10X1.25X40                | 2     |
|         |                      | 6  | ZT1276400077000 | LLAVE REGULADOR AMORTIGUADOR     | 1     |
|         |                      | 7  |                 |                                  |       |
|         |                      | 8  |                 |                                  |       |
|         |                      | 9  |                 |                                  |       |
|         |                      | 10 |                 |                                  |       |
|         |                      | 11 |                 |                                  |       |
|         |                      | 12 |                 |                                  |       |
|         |                      | 13 |                 |                                  |       |
|         |                      | 14 |                 |                                  |       |
|         |                      | 15 |                 |                                  |       |
|         |                      | 16 |                 |                                  |       |
|         |                      | 17 |                 |                                  |       |
|         |                      | 18 |                 |                                  |       |
|         |                      | 19 |                 |                                  |       |
|         |                      | 20 |                 |                                  |       |
|         |                      | 21 |                 |                                  |       |
|         |                      | 22 |                 |                                  |       |
|         |                      | 23 |                 |                                  |       |
|         |                      | 24 |                 |                                  |       |

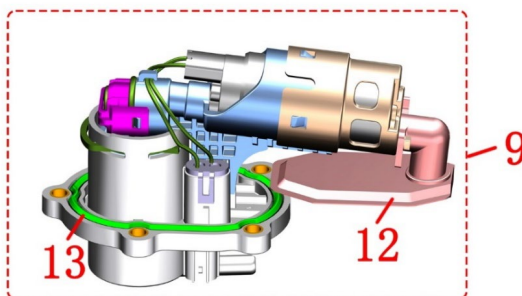
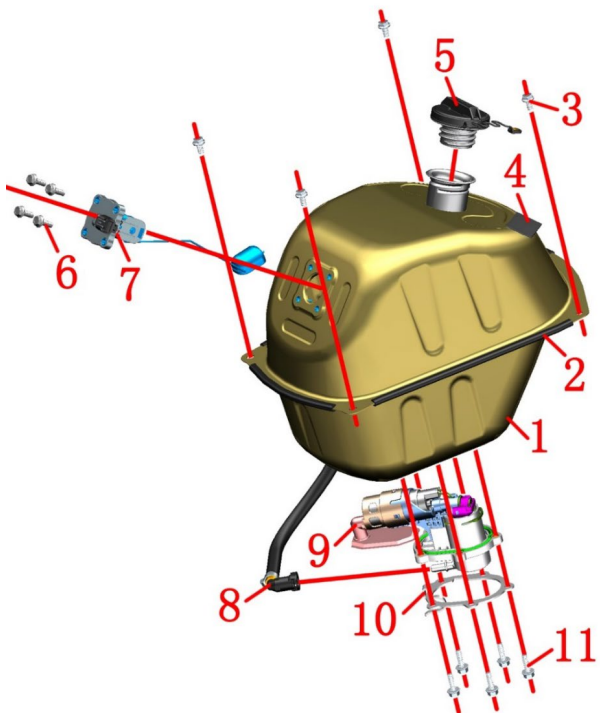
| FIG. 31 | LLANTA TRASERA | Nº              | CÓDIGO   | DESCRIPCIÓN | CANT. |
|---------|----------------|-----------------|--|-------------|-------|
|         | 1              | ZT1246200063000 | TAPON TUERCA M16 RUEDA TRAS.                     | 1           |       |
|         | 2              | ZT1250305029000 | TUERCA M16X1.5 RUEDA TRASERA                     | 1           |       |
|         | 3              | ZT1096200011093 | BUJE 20X28X10 RUEDA TRASERA                      | 1           |       |
|         | 4              | ZT1276200050000 | DISTANCIADOR 20X28X18 RUEDA TRAS.                | 1           |       |
|         | 5              | ZT1251100117093 | BULON M8X25                                      | 5           |       |
|         | 6              | ZT1100300139000 | KIT DISCO FRENO TRASERO-ABS                      | 1           |       |
|         | 7              | ZT1096400001035 | LLANTA TRASERA R14 DORADO                        | 1           |       |
|         | 8              | ZT1230300054100 | CUBIERTA 140/70 R14 - CM577 68S TL E4(A62) IMARK | 1           |       |
|         | 9              | ZT1184300056000 | SENSOR TPM M8 EIBOW/120°                         | 1           |       |
|         | 10             | ZT1250402002000 | REMACHE 3.2X9                                    | 5           |       |
|         | 11             | ZT1100300098000 | DISCO FRENO TRASERO                              | 1           |       |
|         | 12             | ZT1276400010000 | DISCO SENSOR ABS 54T                             | 1           |       |
|         | 13             | ZT1094300016000 | VALVULA INDEPENDIENTE M8 EIBOW/120°              | 1           |       |
|         | 14             | ZT1251100120093 | BULÓN M6X12                                      | 1           |       |
|         | 15             | ZT1181200118000 | SENSOR VELOCIDAD ABS (A)                         | 1           |       |
|         | 16             | ZT1251100101000 | BULON M6X12 (NO STD)                             | 4           |       |
|         | 17             | ZT1224200003000 | GRAMPA FLEXIBLE FRENO TRASERO                    | 4           |       |
|         | 18             | ZT1224100044000 | GRAMPA CABLE SENSOR VELOCIDAD                    | 3           |       |
|         | 19             |                 |  |             |       |
|         | 20             |                 |  |             |       |
|         | 21             |                 |  |             |       |
|         | 22             |                 |  |             |       |
|         | 23             |                 |  |             |       |
|         | 24             |                 |  |             |       |

| FIG. 32 | BRAZO SOPORTE RUEDA TRASERA | Nº | CÓDIGO          | DESCRIPCIÓN                      | CANT. |
|---------|-----------------------------|----|-----------------|----------------------------------|-------|
|         |                             | 1  | ZT1251100084093 | BULON M10×1.5×66                 | 2     |
|         |                             | 2  | ZT4076400004051 | BRAZO SOPORTE RUEDA TRASERA GRIS | 1     |
|         |                             | 3  | ZT1251100101000 | BULON M6X12 (NO STD)             | 1     |
|         |                             | 4  | ZT1224200127000 | GRAMPA FRONTAL CABLE SENSOR VEL. | 1     |
|         |                             | 5  | ZT1246200013000 | RETEN 28X47X7                    | 1     |
|         |                             | 6  | ZT1250700011000 | SEGUER 47X1.75 DE RETEN          | 1     |
|         |                             | 7  | ZT1250601114000 | RODAMIENTO 6204-2RS-C3           | 1     |
|         |                             | 8  | ZT1246200014000 | RETEN 28X40X5                    | 1     |
|         |                             | 9  | ZT1051372001000 | BUJE 10X25X22                    | 1     |
|         |                             | 10 |                 |                                  |       |
|         |                             | 11 |                 |                                  |       |
|         |                             | 12 |                 |                                  |       |
|         |                             | 13 |                 |                                  |       |
|         |                             | 14 |                 |                                  |       |
|         |                             | 15 |                 |                                  |       |
|         |                             | 16 |                 |                                  |       |
|         |                             | 17 |                 |                                  |       |
|         |                             | 18 |                 |                                  |       |
|         |                             | 19 |                 |                                  |       |
|         |                             | 20 |                 |                                  |       |
|         |                             | 21 |                 |                                  |       |
|         |                             | 22 |                 |                                  |       |
|         |                             | 23 |                 |                                  |       |
|         |                             | 24 |                 |                                  |       |

| FIG. 33 | NOMBRE | Nº | CÓDIGO          | DESCRIPCIÓN                      | CANT. |
|---------|--------|----|-----------------|----------------------------------|-------|
|         |        | 1  | ZT4016400014000 | CUADRO D350 COMPLETO             | 1     |
|         |        | 2  | ZT1246200031000 | TAPON CUADRO                     | 2     |
|         |        | 3  | ZT1244100006000 | GOMA TOPE PATENTE                | 2     |
|         |        | 4  | ZT4066200002000 | PLACA SOPORTE POSAPIE DER.       | 1     |
|         |        | 5  | ZT4026200013000 | SOPORTE POSAPIE-CUADRO           | 2     |
|         |        | 6  | ZT1250105136093 | BULON M6X12                      | 6     |
|         |        | 7  | ZT4066200001000 | PLACA SOPORTE POSAPIE IZQ.       | 1     |
|         |        | 8  | ZT1251100101000 | BULON M6X12 (NO STD)             | 2     |
|         |        | 9  | ZT1224200066000 | SOPORTE DE ANTENA EXTERNA PKE    | 1     |
|         |        | 10 | ZT1250402001091 | REMACHE 3X10                     | 2     |
|         |        | 11 | ZT1130900026000 | CUBETA CUADRO                    | 1     |
|         |        | 12 | ZT1136200003000 | CUBETA INF. RODAMIENTO CAÑO VELA | 1     |
|         | 13     |    |                 |                                  |       |
|         | 14     |    |                 |                                  |       |
|         | 15     |    |                 |                                  |       |
|         | 16     |    |                 |                                  |       |
|         | 17     |    |                 |                                  |       |
|         | 18     |    |                 |                                  |       |
|         | 19     |    |                 |                                  |       |
|         | 20     |    |                 |                                  |       |
|         | 21     |    |                 |                                  |       |
|         | 22     |    |                 |                                  |       |
|         | 23     |    |                 |                                  |       |
|         | 24     |    |                 |                                  |       |

FIG. 34

TANQUE COMBUSTIBLE



| Nº | CÓDIGO          | DESCRIPCIÓN                        | CANT. |
|----|-----------------|------------------------------------|-------|
| 1  | ZT4036200001051 | TANQUE COMBUSTIBLE M310            | 1     |
| 2  | ZT1240300021000 | BARRA GOMA DEL DEFLECTOR VIENTO    | 1     |
| 3  | ZT1250105136093 | BULON M6X12                        | 4     |
| 4  | ZT1240300157000 | SILENT-BLOCK ADHESIVO 50X30X2      | 1     |
| 5  | ZT1224100033000 | TAPA TANQUE COMBUSTIBLE            | 1     |
| 6  | ZT1250105137093 | BULON M6X16                        | 4     |
| 7  | ZT1166200001000 | FLOTANTE DE COMBUSTIBLE            | 1     |
| 8  | ZT1050970014000 | MANGUERA DE COMBUSTIBLE            | 1     |
| 9  | ZT1050971004000 | BOMBA DE COMBUSTIBLE (350KPA)      | 1     |
| 10 | ZT1050970012000 | SOPORTE FIJACIÓN BOMBA COMBUSTIBLE | 1     |
| 11 | ZT1250105005097 | BULON M6X20                        | 5     |
| 12 | ZT1050971021000 | FILTRO DE BOMBA COMBUSTIBLE        | 1     |
| 13 | ZT1050971020000 | O-RING DE BOMBA COMBUSTIBLE        | 1     |
| 14 |                 |                                    |       |
| 15 |                 |                                    |       |
| 16 |                 |                                    |       |
| 17 |                 |                                    |       |
| 18 |                 |                                    |       |
| 19 |                 |                                    |       |
| 20 |                 |                                    |       |
| 21 |                 |                                    |       |
| 22 |                 |                                    |       |
| 23 |                 |                                    |       |
| 24 |                 |                                    |       |

| FIG. 35 | INSTALACIÓN ELECTRICA | Nº | CÓDIGO          | DESCRIPCIÓN                            | CANT. |
|---------|-----------------------|----|-----------------|--|-------|
|         |                       | 1  | ZT1244100082000 | CAPUCHÓN DE SENSOR DE CAÍDA            | 1     |
|         |                       | 2  | ZT1184100002000 | SENSOR DE CAÍDA                        | 1     |
|         |                       | 3  | ZT1251100120093 | BULÓN M6X12                            | 2     |
|         |                       | 4  | ZT1276200043000 | ABRAZADERA FLEXIBLE 57MM               | 2     |
|         |                       | 5  | ZT1224100010000 | REMACHE PLASTICO EXPANSIÓN             | 2     |
|         |                       | 6  | ZT1226400020000 | SOPORTE RELÉ                           | 1     |
|         |                       | 7  | ZT1244200103000 | GOMA SOPORTE RELÉ                      | 5     |
|         |                       | 8  | ZT1184100017000 | RELÉ INYECCIÓN ELECTRONICA COMBUSTIBLE | 5     |
|         |                       | 9  | ZT1250105136093 | BULON M6X12                            | 1     |
|         |                       | 10 | ZT1184200016000 | SIRENA DE UNIDAD DE LLAVES PKE         | 1     |
|         |                       | 11 | ZT1270300273000 | PASACABLE FLEX. L=73                   | 1     |
|         |                       | 12 | ZT1251100101000 | BULON M6X12 (NO STD)                   | 1     |
|         |                       | 13 | ZT1184300002000 | RELÉ ARRANQUE                          | 1     |
|         |                       | 14 | ZT1184200053000 | ANTENA UNICA EXTERNA                   | 1     |
|         |                       | 15 | ZT1274100017000 | PASACABLE DE INSTALACIÓN ELECTRICA     | 2     |
|         |                       | 16 | ZT1186400007000 | INSTALACIÓN ELECTRICA M350             | 1     |
|         |                       | 17 | ZT1180300101000 | DESTELLADOR GIRO LED 350               | 1     |
|         |                       | 18 | ZT1240300007000 | GOMA SILENT-BLOCK BATERÍA              | 3     |
|         |                       | 19 | ZT1226400188000 | ABROJO DE ANTENA EXTERNA               | 1     |
| 20      |                       |    |                 |  |       |
| 21      |                       |    |                 |  |       |
| 22      |                       |    |                 |  |       |
| 23      |                       |    |                 |  |       |
| 24      |                       |    |                 |  |       |

FIG. 36

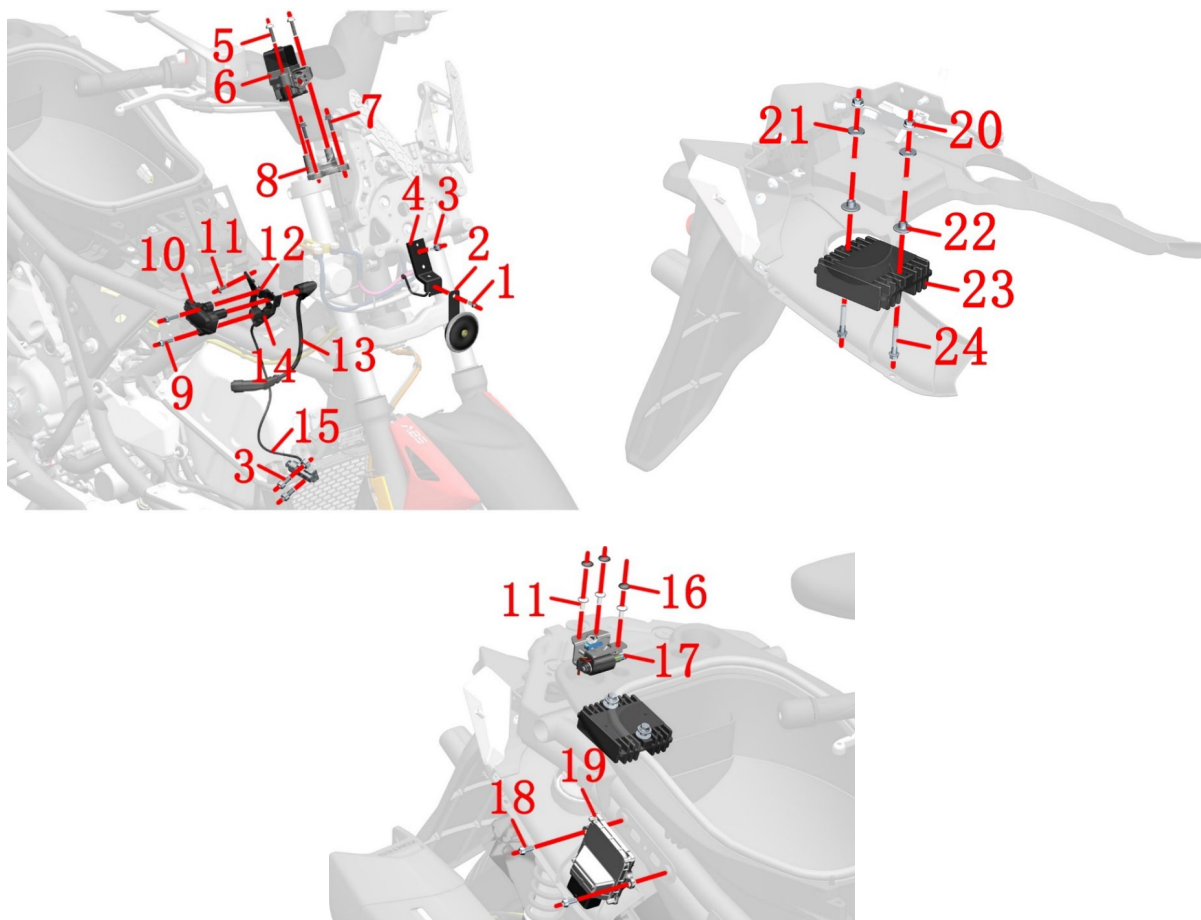
NOMBRE

Nº

CÓDIGO

DESCRIPCIÓN

CANT.

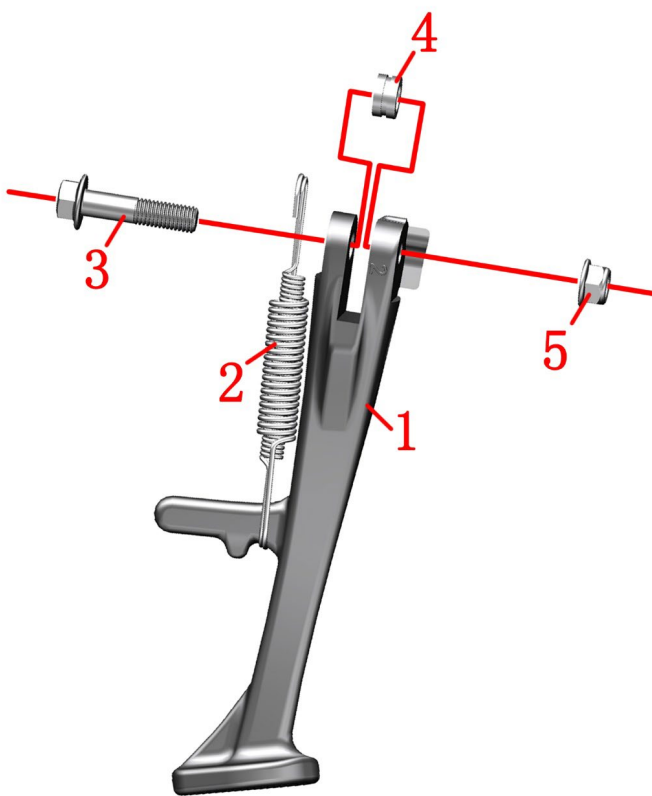


|    |                 |                               |   |
|----|-----------------|-------------------------------|---|
| 1  | ZT1250104006097 | BULON M6X12                   | 1 |
| 2  | ZT1184200004000 | BOCINA                        | 1 |
| 3  | ZT1250205040095 | BULON M8X16                   | 3 |
| 4  | ZT1276400059000 | SOPORTE BOCINA                | 1 |
| 5  | ZT1251100364000 | BULON M6X25                   | 2 |
|    | ZT1251100121093 | BULON M8X25                   | 2 |
| 6  | ZT1184200190000 | TRABA MANUBRIO M310           | 1 |
| 7  | ZT1250105005097 | BULON M6X20                   | 2 |
| 8  | ZT1276200009000 | SOPORTE TRABA MANUBRIO        | 1 |
| 9  | ZT1251100061093 | BULON M6X22                   | 2 |
| 10 | ZT1050958017000 | BOBINA EXTERNA AT             | 1 |
|    | ZT1050958006000 | BOBINA EXTERNA                | 1 |
| 11 | ZT1251100101000 | BULON M6X12 (NO STD)          | 4 |
| 12 | ZT1251300063093 | GRAMPA M6X11X15               | 2 |
| 13 | ZT1050957005000 | CABLE BOBINA EXTERNA          | 1 |
| 14 | ZT1226400035000 | SOPORTE BOBINA EXTERNA        | 1 |
| 15 | ZT1184100012000 | INTERRUPTOR DE MOTOR          | 1 |
| 16 | ZT1246200025000 | CUBRE BULON MANIJA M6         | 1 |
| 17 | ZT1274100058000 | CERRADURA ELECTRONICA ASIENTO | 1 |
| 18 | ZT1251100120093 | BULÓN M6X12                   | 2 |
| 19 | ZT1050971013000 | ECU MSE6.0 EURO V             | 1 |
| 20 | ZT1250303010093 | TUERCA M6                     | 2 |
| 21 | ZT1250502010093 | ARANDELA ESP. 6.1             | 2 |
| 22 | ZT1274100007000 | BUJE                          | 2 |
| 23 | ZT1186200013000 | REGULADOR TENSION             | 1 |
| 24 | ZT1251112002093 | BULON M6X30                   | 2 |

| FIG. 37  | FUSIBLE | Nº              | CÓDIGO              | DESCRIPCIÓN | CANT. |
|--|---------|-----------------|---------------------|-------------|-------|
| <p>The figure shows a motorcycle with a fuse box and various components. Callout 1 points to a red fuse, 2 to a blue fuse, 3 to a green fuse, and 4 to a white fuse. Callout 5 points to a spark plug. Callout 6 points to three red plastic covers. Callout 7 points to three green plastic covers. Callout 8 points to three metal covers.</p> | 1       | ZT1184200127000 | FUSIBLE 10A         | 3           |       |
|  | 2       | ZT1184200128000 | FUSIBLE 15A         | 5           |       |
|  | 3       | ZT1184200206000 | FUSIBLE 1A          | 1           |       |
|  | 4       | ZT1184200129000 | FUSIBLE 25A         | 1           |       |
|  | 5       | ZT1050970004000 | BUJÍA M310 LMAR8A-9 | 1           |       |
|  | 6       | ZT1224300111000 | PRECINTO 20X300     | 4           |       |
|  | 7       | ZT1224300110000 | PRECINTO 20X200     | 9           |       |
|  | 8       | ZT1224300093000 | PRECINTO 20X150     | 2           |       |
|  | 9       |                 |                     |             |       |
|  | 10      |                 |                     |             |       |
|  | 11      |                 |                     |             |       |
|  | 12      |                 |                     |             |       |
|  | 13      |                 |                     |             |       |
|  | 14      |                 |                     |             |       |
|  | 15      |                 |                     |             |       |
|  | 16      |                 |                     |             |       |
|  | 17      |                 |                     |             |       |
|  | 18      |                 |                     |             |       |
|  | 19      |                 |                     |             |       |
|  | 20      |                 |                     |             |       |
|  | 21      |                 |                     |             |       |
|  | 22      |                 |                     |             |       |
|  | 23      |                 |                     |             |       |
|  | 24      |                 |                     |             |       |

| FIG. 38 | PKE | Nº              | CÓDIGO                         | DESCRIPCIÓN | CANT. |
|---------|-----|-----------------|--------------------------------|-------------|-------|
|         | 1   | ZT1186400041000 | UNIDAD DE LLAVES PKE (CR2032)  | 1           |       |
|         | 2   | ZT1186400023000 | UNIDAD DE LLAVES PKE (CR1225)  | 1           |       |
|         | 3   | ZT1251300063093 | GRAMPA M6X11X15                | 2           |       |
|         | 4   | ZT1226400019000 | SOPORTE PKE D350               | 1           |       |
|         | 5   | ZT1224100010000 | REMACHE PLASTICO EXPANSIÓN     | 1           |       |
|         | 6   | ZT1251200050094 | BULON PARKER 3.9X12            | 1           |       |
|         | 7   | ZT1184300040000 | FUSILERA PRINCIPAL             | 1           |       |
|         | 8   | ZT1251100328000 | BULON M6X14 8.5X3              | 2           |       |
|         | 9   | ZT1184300005000 | ANTENA TRASERA                 | 1           |       |
|         | 10  | ZT3100100854100 | PULSERA DE LLAVE NEGRO         | 1           |       |
|         | 11  | ZT1244200100000 | LLAVERO DE GOMA                | 1           |       |
|         | 12  | ZT1184200182000 | PILA LLAVE ALARMA (BAND)       | 1           |       |
|         | 13  | ZT1184200210000 | COMANDO LLAVE - (COPIA) CR2032 | 1           |       |
|         | 14  | ZT1184200092000 | COMANDO LLAVE - (COPIA)        | 1           |       |
|         | 15  | ZT1186100007000 | TAPA PILA COMANDO LLAVE        | 1           |       |
|         | 16  | ZT1184300049000 | TAPA PILA COMANDO LLAVE        | 1           |       |
|         | 17  | ZT1186400048000 | PILA COMANDO LLAVE             | 1           |       |
|         | 18  |                 |                                |             |       |
|         | 19  |                 |                                |             |       |
|         | 20  |                 |                                |             |       |
|         | 21  |                 |                                |             |       |
|         | 22  |                 |                                |             |       |
|         | 23  |                 |                                |             |       |
|         | 24  |                 |                                |             |       |

| FIG. 39 | SOPORTE MOTOR | Nº | CÓDIGO          | DESCRIPCIÓN                     | CANT. |
|---------|---------------|----|-----------------|---------------------------------|-------|
|         |               | 1  | ZT1251112018000 | BULON M12X1.25X105              | 4     |
|         |               | 2  | ZT1251100294000 | BULON M12X1.25X105              |       |
|         |               | 3  | ZT4026200021000 | SOPORTE MOTOR M310 (BUJE 36)    | 1     |
|         |               | 4  | ZT1250305009091 | TUERCA M12X1.25                 | 5     |
|         |               | 5  | ZT1251500034000 | RETEN 12.3X26X3                 | 2     |
|         |               | 6  | ZT1251100300093 | BULON M12X1.25X290              | 1     |
|         |               | 7  | ZT1276400042000 | PERNO CUADRO 12.2X17X151        | 1     |
|         |               | 8  | ZT1276200034000 | BUJE SILENT-BLOCK 12X35 + 34X29 | 2     |
|         |               | 9  | ZT1276200054000 | BUJE SILENT-BLOCK 12X39 + 36X35 | 2     |
| 10      |               |    |                 |                                 |       |
| 11      |               |    |                 |                                 |       |
| 12      |               |    |                 |                                 |       |
| 13      |               |    |                 |                                 |       |
| 14      |               |    |                 |                                 |       |
| 15      |               |    |                 |                                 |       |
| 16      |               |    |                 |                                 |       |
| 17      |               |    |                 |                                 |       |
| 18      |               |    |                 |                                 |       |
| 19      |               |    |                 |                                 |       |
| 20      |               |    |                 |                                 |       |
| 21      |               |    |                 |                                 |       |
| 22      |               |    |                 |                                 |       |
| 23      |               |    |                 |                                 |       |
| 24      |               |    |                 |                                 |       |

| FIG. 40   | SOSTEN LATERA | Nº | CÓDIGO          | DESCRIPCIÓN              | CANT. |  |
|---|---------------|----|-----------------|--------------------------|-------|--|
|  |               | 1  | ZT1276400054051 | SOSTEN LATERAL GRIS D350 | 1     |  |
|   |               | 2  | ZT1264100001000 | RESORTE SOSTEN LATERAL   | 1     |  |
|   |               | 3  | ZT1251100088094 | BULON M10x1.5x43         | 1     |  |
|   |               | 4  | ZT1251700025091 | BUJE DE SOSTEN LATERAL   | 1     |  |
|   |               | 5  | ZT1251300057093 | TUERCA M10X1.5           | 1     |  |
|   |               | 6  |                 |                          |       |  |
|   |               | 7  |                 |                          |       |  |
|   |               | 8  |                 |                          |       |  |
|   |               | 9  |                 |                          |       |  |
|   |               | 10 |                 |                          |       |  |
|   |               | 11 |                 |                          |       |  |
|   |               | 12 |                 |                          |       |  |
|   |               | 13 |                 |                          |       |  |
|   |               | 14 |                 |                          |       |  |
|   |               | 15 |                 |                          |       |  |
|   |               | 16 |                 |                          |       |  |
|   |               | 17 |                 |                          |       |  |
|   |               | 18 |                 |                          |       |  |
|   |               | 19 |                 |                          |       |  |
|   |               | 20 |                 |                          |       |  |
|   |               | 21 |                 |                          |       |  |
|   |               | 22 |                 |                          |       |  |
|   |               | 23 |                 |                          |       |  |
|   |               | 24 |                 |                          |       |  |

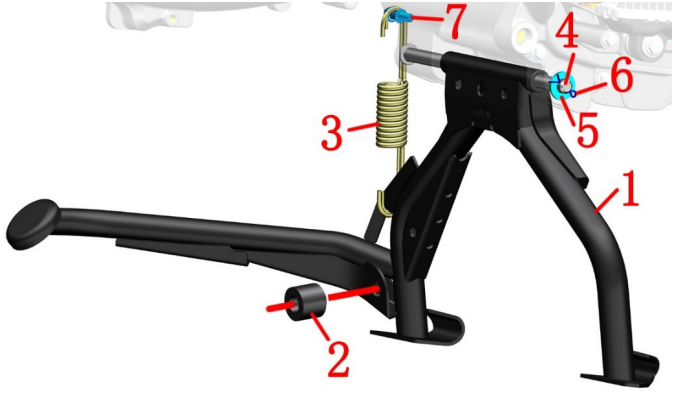
| FIG. 41   | CAJA FILTRO DE AIRE | Nº              | CÓDIGO                              | DESCRIPCIÓN | CANT. |
|---|---------------------|-----------------|-------------------------------------|-------------|-------|
| <p>14</p> <p>11</p> <p>12</p> <p>13</p> <p>仅含空滤器前壳盖, 不含其它配件<br/>Contains only the air filter front housing ,no other accessories.</p> | 1                   | ZT1051361034000 | ABRAZADERA CAJA FILTRO 54X10        | 1           |       |
|   | 2                   | ZT1276200043000 | ABRAZADERA FLEXIBLE 57MM            | 2           |       |
|   | 3                   | ZT1251300063093 | GRAMPA M6X11X15                     | 1           |       |
|   | 4                   | ZT1244100002000 | SILENT-BLOCK CACHAS TANQUE          | 2           |       |
|   | 5                   | ZT1251112002093 | BULON M6X30                         | 3           |       |
|   | 6                   | ZT1226400011000 | CAJA FILTRO DE AIRE                 | 1           |       |
|   | 7                   | ZT1246400042000 | TAPON DE GOMA CAJA FILTRO           | 2           |       |
|   | 8                   | ZT1226400126000 | SOPORTE MONTAJE CAJA FILTRO         | 1           |       |
|   | 9                   | ZT1050961004000 | SENSOR TEMPERATURA AIRE DE ADMISION | 1           |       |
|   | 10                  | ZT1226400156000 | TAPA CAJA FILTRO DE AIRE            | 1           |       |
|   | 11                  | ZT1226400199000 | FILTRO AIRE DE MOTOR                | 1           |       |
|   | 12                  | ZT1226400175000 | FILTRO DE AIRE                      | 1           |       |
|   | 13                  | ZT1244300056000 | GOMA SENSOR TEMP. DE AIRE           | 1           |       |
|   | 14                  | ZT1246200039000 | BURLETE 20X15 FILTRO AIRE MOTOR     | 1           |       |
| 15  |                     |                 |                                     |             |       |
| 16  |                     |                 |                                     |             |       |
| 17  |                     |                 |                                     |             |       |
| 18  |                     |                 |                                     |             |       |
| 19  |                     |                 |                                     |             |       |
| 20  |                     |                 |                                     |             |       |
| 21  |                     |                 |                                     |             |       |
| 22  |                     |                 |                                     |             |       |
| 23  |                     |                 |                                     |             |       |
| 24  |                     |                 |                                     |             |       |

| FIG. 42 | NOMBRE | Nº | CÓDIGO          | DESCRIPCIÓN                      | CANT. |
|---------|--------|----|-----------------|----------------------------------|-------|
|         |        | 1  | ZT1251100328000 | BULON M6X14 8.5X3                | 4     |
|         |        | 2  | ZT1244100052000 | ARANDELA GOMA 8.5X14X1           | 4     |
|         |        | 3  | ZT1224100010000 | REMACHE PLASTICO EXPANSIÓN       | 5     |
|         |        | 4  | ZT1226400078000 | TAPA INT. DECORATIVA CAJA FILTRO | 1     |
|         |        | 5  | ZT4136400019000 | CUBRE CAJA FILTRO AIRE           | 1     |
|         |        | 6  | ZT1246200058000 | SILENT-BLOCK ADHESIVO 500X80     | 1     |
|         |        | 7  | ZT1246400042000 | TAPON DE GOMA CAJA FILTRO        | 1     |
|         |        | 8  | ZT1010403007021 | AISLANTE DE CALOR CAJA FILTRO    | 1     |
|         |        | 9  | ZT1246200039000 | BURLETE 20X15 FILTRO AIRE MOTOR  | 1     |
|         | 10     |    |                 |                                  |       |
|         | 11     |    |                 |                                  |       |
|         | 12     |    |                 |                                  |       |
|         | 13     |    |                 |                                  |       |
|         | 14     |    |                 |                                  |       |
|         | 15     |    |                 |                                  |       |
|         | 16     |    |                 |                                  |       |
|         | 17     |    |                 |                                  |       |
|         | 18     |    |                 |                                  |       |
|         | 19     |    |                 |                                  |       |
|         | 20     |    |                 |                                  |       |
|         | 21     |    |                 |                                  |       |
|         | 22     |    |                 |                                  |       |
|         | 23     |    |                 |                                  |       |
|         | 24     |    |                 |                                  |       |

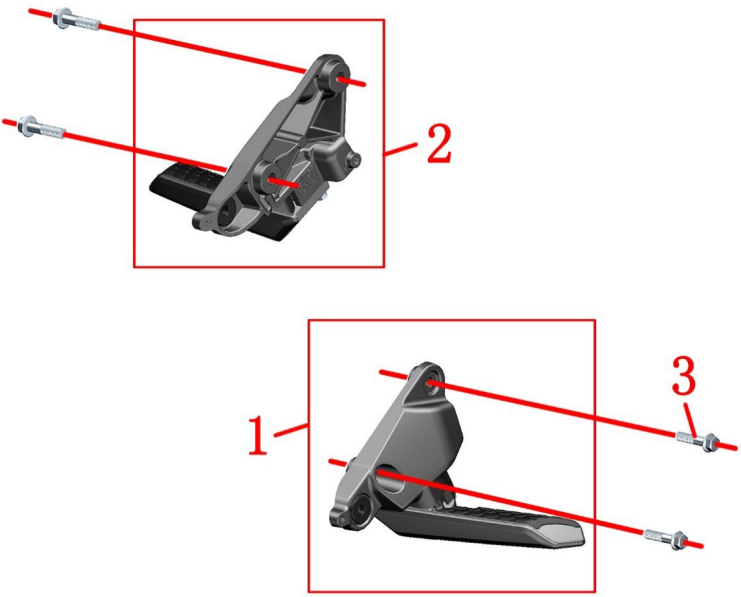
| FIG. 43 | CANISTER | Nº | CÓDIGO          | DESCRIPCIÓN                              | CANT. |
|---------|----------|----|-----------------|--|-------|
|         |          | 1  | ZT1226400036000 | CANISTER D350                            | 1     |
|         |          | 2  | ZT1224200066000 | SOPORTE DE ANTENA EXTERNA PKE            | 2     |
|         |          | 3  | ZT1246400012000 | TUBO ENTRADA DE CANISTER 5X9X450         | 1     |
|         |          | 4  | ZT1246400014000 | TUBO SALIDA ELECTROVALVULA TANQUE        | 1     |
|         |          | 5  | ZT1050954009000 | ELECTROVALVULA TANQUE FILTRO COMBUSTIBLE | 1     |
|         |          | 6  | ZT1250303010093 | TUERCA M6                                | 1     |
|         |          | 7  | ZT1226400034000 | SOPORTE ELECTROVALVULA CANISTER          | 1     |
|         |          | 8  | ZT1251100101000 | BULON M6X12 (NO STD)                     | 1     |
|         |          | 9  | ZT1246400013000 | TUBO ENTRADA ELECTROVALVULA TANQUE       | 1     |
|         | 10       |    |                 |  |       |
|         | 11       |    |                 |  |       |
|         | 12       |    |                 |  |       |
|         | 13       |    |                 |  |       |
|         | 14       |    |                 |  |       |
|         | 15       |    |                 |  |       |
|         | 16       |    |                 |  |       |
|         | 17       |    |                 |  |       |
|         | 18       |    |                 |  |       |
|         | 19       |    |                 |  |       |
|         | 20       |    |                 |  |       |
|         | 21       |    |                 |  |       |
|         | 22       |    |                 |  |       |
|         | 23       |    |                 |  |       |
|         | 24       |    |                 |  |       |

| FIG. 44 | CUERPO INYECTOR | Nº | CÓDIGO          | DESCRIPCIÓN                                 | CANT. |
|---------|-----------------|----|-----------------|---|-------|
|         |                 | 1  | ZT1051471001000 | O-RING 43X2 AISLANTE ACOPLA CUERPO INYECTOR | 2     |
|         |                 | 2  | ZT1050971002000 | AISLANTE ACOPLA CUERPO INYECTOR             | 1     |
|         |                 | 3  | ZT1051371002000 | ABRAZADERA 59X9 CUERPO INYECTOR             | 1     |
|         |                 | 4  | ZT1050954041000 | CUERPO INYECTOR (CON SENSOR TPS)            | 1     |
|         |                 | 5  | ZT1251100364000 | BULON M6X25                                 | 2     |
|         |                 | 6  | ZT1050954040000 | PASATUBO TUBO COMBUSTIBLE                   | 1     |
|         |                 | 7  | ZT1050954025000 | MOTOR PASO A PASO 8MM                       | 1     |
|         |                 | 8  | ZT1050971001000 | ACOPLE CUERPO INYECTOR                      | 1     |
|         |                 | 9  | ZT1251700163000 | BUJE 6.2X10X21                              | 1     |
|         |                 | 10 | ZT1050971008000 | TUBO CONEXIÓN SENSOR PRESIÓN DE ADMISIÓN    | 1     |
|         |                 | 11 | ZT1050961003000 | SENSOR PRESIÓN DE ADMISIÓN                  | 1     |
|         |                 | 12 | ZT1251112003093 | BULON M6X45                                 | 1     |
|         |                 | 13 | ZT1250105005097 | BULON M6X20                                 | 1     |
|         |                 | 14 | ZT1050970002000 | CAPUCHON DE INYECTOR                        | 1     |
|         |                 | 15 | ZT1050954023000 | INYECTOR COMBUSTIBLE                        | 1     |
|         |                 | 16 | ZT1050958018000 | SENSOR TPS                                  | 1     |
|         |                 | 17 | ZT1050957021000 | CAPUCHÓN SENSOR PRESIÓN ADMISIÓN            | 1     |
| 18      |                 |    |                 |   |       |
| 19      |                 |    |                 |   |       |
| 20      |                 |    |                 |   |       |
| 21      |                 |    |                 |   |       |
| 22      |                 |    |                 |   |       |
| 23      |                 |    |                 |   |       |
| 24      |                 |    |                 |   |       |

| FIG. 45 | MOTOR COMPLETO | Nº | CÓDIGO          | DESCRIPCIÓN                   | CANT. |
|---------|----------------|----|-----------------|-------------------------------|-------|
|         |                | 1  | ZT5710101004000 | MOTOR COMPLETO D350           | 1     |
|         |                | 2  | ZT1050871006000 | FILTRO ACEITE 350 SCOOTER     | 1     |
|         |                | 3  | ZT1226400199000 | FILTRO AIRE DE MOTOR          | 1     |
|         |                | 4  | ZT1276200043000 | ABRAZADERA FLEXIBLE 57MM      | 3     |
|         |                | 5  | ZT1276400041000 | SOPORTE CABLES DE MOTOR       | 1     |
|         |                | 6  | ZT1251100102000 | BULON M6X16 (NO STD)          | 4     |
|         |                | 7  | ZT1226400079000 | TOMA AIRE MOTOR IZQ. COMPLETO | 1     |
|         |                | 8  | ZT1246400077000 | TAPON GOMA MOTOR 34           | 1     |
|         |                | 9  | ZT1246400078000 | TAPON GOMA MOTOR 32           | 1     |
|         |                | 10 | ZT1251100067093 | BULON M6X10                   | 2     |
|         |                | 11 |                 |                               |       |
|         |                | 12 |                 |                               |       |
|         |                | 13 |                 |                               |       |
|         |                | 14 |                 |                               |       |
|         |                | 15 |                 |                               |       |
|         |                | 16 |                 |                               |       |
|         |                | 17 |                 |                               |       |
|         |                | 18 |                 |                               |       |
|         |                | 19 |                 |                               |       |
|         |                | 20 |                 |                               |       |
|         |                | 21 |                 |                               |       |
|         |                | 22 |                 |                               |       |
|         |                | 23 |                 |                               |       |
|         |                | 24 |                 |                               |       |

| FIG. 46 | CABALLETE   | Nº | CÓDIGO          | DESCRIPCIÓN                | CANT. |
|---------|---|----|-----------------|----------------------------|-------|
|         |  | 1  | ZT4026400062000 | CABALLETE V2               | 1     |
|         |   | 2  | ZT1246400072000 | TOPE GOMA CABALLETE        | 1     |
|         |   | 3  | ZT1260300037093 | RESORTE CABALLETE          | 1     |
|         |   | 4  | ZT1252100032000 | PERNO CABALLETE            | 1     |
|         |   | 5  | ZT1250503006091 | ARANDELA GB97.1 Φ10 (ZINC) | 1     |
|         |   | 6  | ZT1250401011093 | CHAVETA 2X15               | 1     |
|         |   | 7  | ZT1251100166000 | BULON RESORTE CABALLETE    | 1     |
|         |   | 8  |                 |                            |       |
|         |   | 9  |                 |                            |       |
|         |   | 10 |                 |                            |       |
|         |   | 11 |                 |                            |       |
|         |   | 12 |                 |                            |       |
|         |   | 13 |                 |                            |       |
|         |   | 14 |                 |                            |       |
|         |   | 15 |                 |                            |       |
|         |   | 16 |                 |                            |       |
|         |   | 17 |                 |                            |       |
|         |   | 18 |                 |                            |       |
|         |   | 19 |                 |                            |       |
|         |   | 20 |                 |                            |       |
|         |   | 21 |                 |                            |       |
|         |   | 22 |                 |                            |       |
|         |   | 23 |                 |                            |       |
|         |   | 24 |                 |                            |       |

| FIG. 47 | SILENCIADOR EURO V | Nº              | CÓDIGO                             | DESCRIPCIÓN | CANT. |
|---------|--------------------|-----------------|------------------------------------|-------------|-------|
|         | 1                  | ZT1050970011000 | SONDA LAMBDA (L=635)               | 1           |       |
|         | 2                  | ZT1070100499000 | JUNTA DE ESCAPE 350                | 1           |       |
|         | 3                  | ZT1251300058093 | TUECA M8 TUBO SALIDA ESCAPE        | 2           |       |
|         | 4                  | ZT4086400019000 | SILENCIADOR EURO V CATALIZADOR     | 1           |       |
|         | 5                  | ZT1251100328000 | BULON M6X14 8.5X3                  | 1           |       |
|         | 6                  | ZT1251500007091 | ARANDELA Ø10.5xØ24x2               | 2           |       |
|         | 7                  | ZT1250205129000 | BULON M10X1.5X20                   | 2           |       |
|         | 8                  | ZT1251100102000 | BULON M6X16 (NO STD)               | 6           |       |
|         | 9                  | ZT1244100017000 | GOMA BUJE SEPARADOR SILENCIADOR    | 6           |       |
|         | 10                 | ZT1274100007000 | BUJE                               | 6           |       |
|         | 11                 | ZT1270300201000 | ARANDELA 6X20X1.6 SILENCIADOR      | 6           |       |
|         | 12                 | ZT4046402306000 | PROTECTOR SILENCIADOR TRASERO      | 1           |       |
|         | 13                 | ZT4046402305000 | PROTECTOR SILENCIADOR FRONTAL      | 1           |       |
|         | 14                 | ZT4086400018000 | SILENCIADOR EURO V CATALIZADOR KIT | 1           |       |
| 15      |                    |                 |                                    |             |       |
| 16      |                    |                 |                                    |             |       |
| 17      |                    |                 |                                    |             |       |
| 18      |                    |                 |                                    |             |       |
| 19      |                    |                 |                                    |             |       |
| 20      |                    |                 |                                    |             |       |
| 21      |                    |                 |                                    |             |       |
| 22      |                    |                 |                                    |             |       |
| 23      |                    |                 |                                    |             |       |
| 24      |                    |                 |                                    |             |       |

| FIG. 48   | KIT PEDALIN ACOMPAÑANTE | Nº | CÓDIGO          | DESCRIPCIÓN                  | CANT. |  |
|---|-------------------------|----|-----------------|------------------------------|-------|--|
|  |                         | 1  | ZT1276200001000 | KIT PEDALIN ACOMPAÑANTE IZQ. | 1     |  |
|   |                         | 2  | ZT1276200002000 | KIT PEDALIN ACOMPAÑANTE DER. | 1     |  |
|   |                         | 3  | ZT1250105143093 | BULON M6X35                  | 4     |  |
|   |                         | 4  |                 |                              |       |  |
|   |                         | 5  |                 |                              |       |  |
|   |                         | 6  |                 |                              |       |  |
|   |                         | 7  |                 |                              |       |  |
|   |                         | 8  |                 |                              |       |  |
|   |                         | 9  |                 |                              |       |  |
|   |                         | 10 |                 |                              |       |  |
|   |                         | 11 |                 |                              |       |  |
|   |                         | 12 |                 |                              |       |  |
|   |                         | 13 |                 |                              |       |  |
|   |                         | 14 |                 |                              |       |  |
|   |                         | 15 |                 |                              |       |  |
|   |                         | 16 |                 |                              |       |  |
|   |                         | 17 |                 |                              |       |  |
|   |                         | 18 |                 |                              |       |  |
|   |                         | 19 |                 |                              |       |  |
|   |                         | 20 |                 |                              |       |  |
|   |                         | 21 |                 |                              |       |  |
|   |                         | 22 |                 |                              |       |  |
|   |                         | 23 |                 |                              |       |  |
|   |                         | 24 |                 |                              |       |  |

| FIG. 49 | POSAPIE ACOMP. IZQ. | Nº | CÓDIGO          | DESCRIPCIÓN                      | CANT. |  |
|---------|---------------------|----|-----------------|----------------------------------|-------|--|
|         |                     | 1  | ZT1244100002000 | SILENT-BLOCK CACHAS TANQUE       | 1     |  |
|         |                     | 2  | ZT1250105143093 | BULON M6X35                      | 2     |  |
|         |                     | 3  | ZT1020543038000 | PLACA POSICION PEDALIN ACOMP.    | 1     |  |
|         |                     | 4  | ZT1260100352000 | RESORTE POSAPIE ACOMP. IZQ. EXT  | 1     |  |
|         |                     | 5  | ZT1260100224000 | RESORTE POSAPIE ACOMP. IZQ.      | 1     |  |
|         |                     | 6  | ZT1251700118000 | BUJE 8X13X18.1                   | 1     |  |
|         |                     | 7  | ZT1250205043093 | BULON M8X55                      | 1     |  |
|         |                     | 8  | ZT1251100061093 | BULON M6X22                      | 1     |  |
|         |                     | 9  | ZT4064200021051 | SOPORTE POSAPIE ACOMP. IZQ. GRIS | 1     |  |
|         |                     | 10 | ZT1020543036000 | DESILIZADOR PEDALIN IZQ. ACOMP.  | 1     |  |
|         |                     | 11 | ZT1260100223000 | RESORTE TRABA POSAPIE ACOMP.     | 1     |  |
|         |                     | 12 | ZT4066200015051 | SOPORTE PEDALIN ACOMP. IZQ. GRIS | 1     |  |
|         |                     | 13 | ZT1250205038000 | BULON M5X12                      | 1     |  |
|         |                     | 14 | ZT1246200009000 | GOMA PEDALIN ACOMP. IZQ          | 1     |  |
|         |                     | 15 | ZT1276200007000 | PLACA DE GOMA PEDALIN ACOMP.     | 1     |  |
|         |                     | 16 | ZT4066400027051 | BASE PEDALIN IZQ. GRIS           | 1     |  |
|         |                     | 17 |                 |                                  |       |  |
|         |                     | 18 |                 |                                  |       |  |
|         |                     | 19 |                 |                                  |       |  |
|         |                     | 20 |                 |                                  |       |  |
|         |                     | 21 |                 |                                  |       |  |
|         |                     | 22 |                 |                                  |       |  |
|         |                     | 23 |                 |                                  |       |  |
|         |                     | 24 |                 |                                  |       |  |

| FIG. 50 | POSAPIE ACOMP. DER | Nº | CÓDIGO          | DESCRIPCIÓN                      | CANT. |
|---------|--------------------|----|-----------------|----------------------------------|-------|
|         |                    | 1  | ZT1244100002000 | SILENT-BLOCK CACHAS TANQUE       | 1     |
|         |                    | 2  | ZT1250105143093 | BULON M6X35                      | 2     |
|         |                    | 3  | ZT1020543038000 | PLACA POSICION PEDALIN ACOMP.    | 1     |
|         |                    | 4  | ZT1260100353000 | RESORTE POSAPIE ACOMP. DER. EXT  | 1     |
|         |                    | 5  | ZT1260100225000 | RESORTE POSAPIE ACOMP. DER.      | 1     |
|         |                    | 6  | ZT1251700118000 | BUJE 8X13X18.1                   | 1     |
|         |                    | 7  | ZT1250205043093 | BULON M8X55                      | 1     |
|         |                    | 8  | ZT1251100061093 | BULON M6X22                      | 1     |
|         |                    | 9  | ZT4064200016051 | SOPORTE POSAPIE ACOMP. DER. GRIS | 1     |
|         |                    | 10 | ZT1020543037000 | DESLIZADOR PEDALIN DER. ACOMP.   | 1     |
|         |                    | 11 | ZT1260100223000 | RESORTE TRABA POSAPIE ACOMP.     | 1     |
|         |                    | 12 | ZT4066200016051 | SOPORTE PEDALIN ACOMP. DER. GRIS | 1     |
|         |                    | 13 | ZT1250205038000 | BULON M5X12                      | 1     |
|         |                    | 14 | ZT1246200008000 | GOMA PEDALIN ACOMP. DER.         | 1     |
|         |                    | 15 | ZT1276200007000 | PLACA DE GOMA PEDALIN ACOMP.     | 1     |
|         |                    | 16 | ZT4066400028051 | BASE PEDALIN DER. GRIS           | 1     |
|         | 17                 |    |                 |                                  |       |
|         | 18                 |    |                 |                                  |       |
|         | 19                 |    |                 |                                  |       |
|         | 20                 |    |                 |                                  |       |
|         | 21                 |    |                 |                                  |       |
|         | 22                 |    |                 |                                  |       |
|         | 23                 |    |                 |                                  |       |
|         | 24                 |    |                 |                                  |       |

| FIG. 51 | SILENT-BLOCK CACHAS TANQUE | Nº | CÓDIGO          | DESCRIPCIÓN                      | CANT. |
|---------|----------------------------|----|-----------------|----------------------------------|-------|
|         |                            | 1  | ZT1244100002000 | SILENT-BLOCK CACHAS TANQUE       | 1     |
|         |                            | 2  | ZT1250105143093 | BULON M6X35                      | 2     |
|         |                            | 3  | ZT1274200286000 | PERNO TRABA DE POSAPIE           | 1     |
|         |                            | 4  | ZT1274200148000 | SEGURO POSAPIE ACOMP.            | 1     |
|         |                            | 5  | ZT1260100352000 | RESORTE POSAPIE ACOMP. IZQ. EXT  | 1     |
|         |                            | 6  | ZT1260100224000 | RESORTE POSAPIE ACOMP. IZQ.      | 1     |
|         |                            | 7  | ZT1251700118000 | BUJE 8X13X18.1                   | 1     |
|         |                            | 8  | ZT1250205043093 | BULON M8X55                      | 1     |
|         |                            | 9  | ZT1251100061093 | BULON M6X22                      | 1     |
|         |                            | 10 | ZT4064200021051 | SOPORTE POSAPIE ACOMP. IZQ. GRIS | 1     |
|         |                            | 11 | ZT1032142049000 | TRABA POSAPIE ACOMP. IZQ.        | 1     |
|         |                            | 12 | ZT1260100223000 | RESORTE TRABA POSAPIE ACOMP.     | 1     |
|         |                            | 13 | ZT4066200004051 | SOPORTE PEDALIN ACOMP. IZQ.      | 1     |
|         |                            | 14 | ZT1250205038000 | BULON M5X12                      | 1     |
|         |                            | 15 | ZT1246200009000 | GOMA PEDALIN ACOMP. IZQ.         | 1     |
|         |                            | 16 | ZT1276200007000 | PLACA DE GOMA PEDALIN ACOMP.     | 1     |
|         |                            | 17 | ZT1020562023051 | BASE PEDALIN IZQ. V2             | 1     |
|         |                            | 18 |                 |                                  |       |
|         |                            | 19 |                 |                                  |       |
|         |                            | 20 |                 |                                  |       |
|         |                            | 21 |                 |                                  |       |
|         |                            | 22 |                 |                                  |       |
|         |                            | 23 |                 |                                  |       |
|         |                            | 24 |                 |                                  |       |

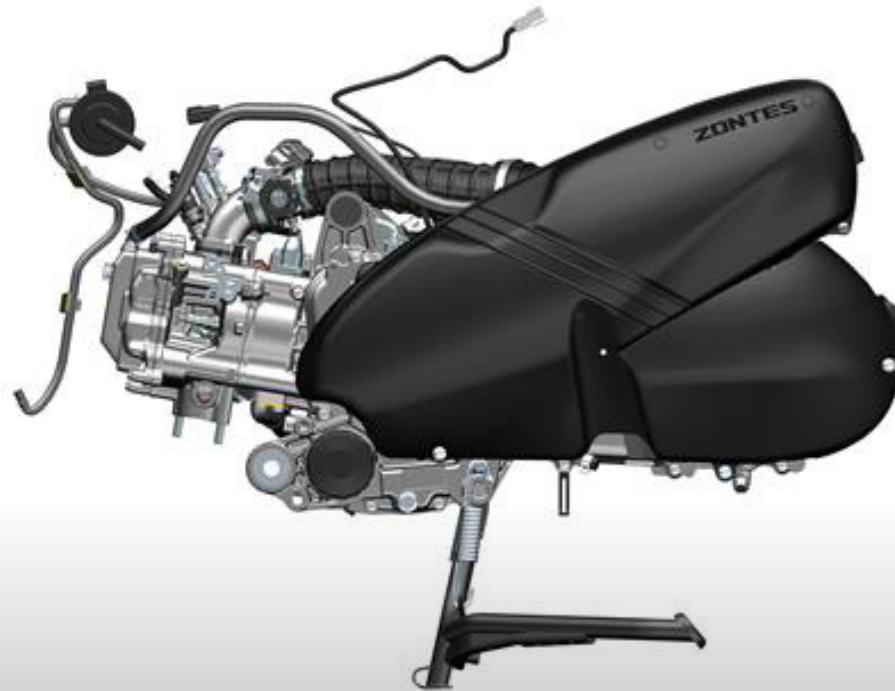
| FIG. 52 | SILENT-BLOCK CACHAS TANQUE | Nº | CÓDIGO          | DESCRIPCIÓN                      | CANT. |
|---------|----------------------------|----|-----------------|----------------------------------|-------|
|         |                            | 1  | ZT1244100002000 | SILENT-BLOCK CACHAS TANQUE       | 1     |
|         |                            | 2  | ZT1250105143093 | BULON M6X35                      | 2     |
|         |                            | 3  | ZT1274200286000 | PERNO TRABA DE POSAPIE           | 1     |
|         |                            | 4  | ZT1274200148000 | SEGURO POSAPIE ACOMP.            | 1     |
|         |                            | 5  | ZT1032142050000 | TRABA POSAPIE ACOMP. DER         | 1     |
|         |                            | 6  | ZT1260100353000 | RESORTE POSAPIE ACOMP. DER. EXT  | 1     |
|         |                            | 7  | ZT1260100225000 | RESORTE POSAPIE ACOMP. DER.      | 1     |
|         |                            | 8  | ZT1251700118000 | BUJE 8X13X18.1                   | 1     |
|         |                            | 9  | ZT1250205043093 | BULON M8X55                      | 1     |
|         |                            | 10 | ZT1251100061093 | BULON M6X22                      | 1     |
|         |                            | 11 | ZT4064200016051 | SOPORTE POSAPIE ACOMP. DER. GRIS | 1     |
|         |                            | 12 | ZT1260100223000 | RESORTE TRABA POSAPIE ACOMP.     | 1     |
|         |                            | 13 | ZT4066200005051 | SOPORTE PEDALIN ACOMP. DER.      | 1     |
|         |                            | 14 | ZT1250205038000 | BULON M5X12                      | 1     |
|         |                            | 15 | ZT1246200008000 | GOMA PEDALIN ACOMP. DER.         | 1     |
|         |                            | 16 | ZT1276200007000 | PLACA DE GOMA PEDALIN ACOMP.     | 1     |
|         |                            | 17 | ZT1020562024051 | BASE PEDALIN DER. V2             | 1     |
|         |                            | 18 |                 |                                  |       |
|         |                            | 19 |                 |                                  |       |
|         |                            | 20 |                 |                                  |       |
|         |                            | 21 |                 |                                  |       |
|         |                            | 22 |                 |                                  |       |
|         |                            | 23 |                 |                                  |       |
|         |                            | 24 |                 |                                  |       |

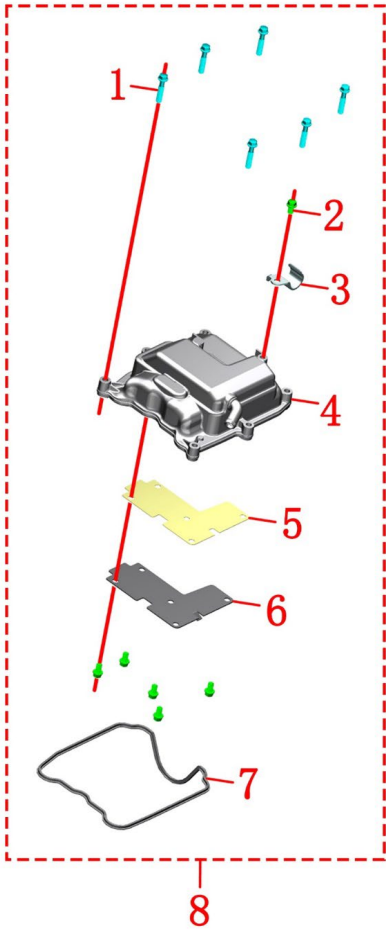
| FIG. 53 | NOMBRE | Nº | CÓDIGO          | DESCRIPCIÓN                          | CANT. |
|---------|--------|----|-----------------|--------------------------------------|-------|
|         |        | 1  | ZT1226400010000 | TANQUE AGUA AUXILIAR                 | 1     |
|         |        | 2  | ZT1274200088000 | ABRAZADERA CLIP 10.5                 | 1     |
|         |        | 3  | ZT1251100061093 | BULON M6X22                          | 3     |
|         |        | 4  | ZT1274100017000 | PASACABLE DE INSTALACIÓN ELECTRICA   | 1     |
|         |        | 5  | ZT1246400011000 | TUBO TANQUE AGUA AUXILIAR            | 1     |
|         |        | 6  | ZT1274200079000 | ABRAZADERA CLIP 9                    | 1     |
|         |        | 7  | ZT1276400005000 | TAPA DE RADIADOR DE AGUA             | 1     |
|         |        | 8  | ZT1251100101000 | BULON M6X12 (NO STD)                 | 1     |
|         |        | 9  | ZT1274200041000 | ABRAZADERA MAGUERA MOTOR             | 3     |
|         |        | 10 | ZT1246400010000 | TUBO CONEXIÓN TAPA RADIADOR          | 1     |
|         |        | 11 | ZT1251112002093 | BULON M6X30                          | 1     |
|         |        | 12 | ZT1276400004000 | RADIADOR DE AGUA                     | 1     |
|         |        | 13 | ZT1051370012000 | ABRAZADERA CLIP 24                   | 2     |
|         |        | 14 | ZT1246400008000 | TUBO SALIDA RADIADOR AGUA            | 1     |
|         |        | 15 | ZT1251100328000 | BULON M6X14 8.5X3                    | 1     |
|         |        | 16 | ZT1226400109000 | SOPORTE PASATUBO RADIADOR AGUA       | 1     |
|         |        | 17 | ZT1274200090000 | ABRAZADERA CLIP                      | 1     |
|         |        | 18 | ZT1246400009000 | TUBO ENTRADA RADIADOR AGUA           | 1     |
|         |        | 19 | ZT1244100081000 | SILENT-BLOCK ADHESIVO 10X100X2       | 1     |
|         |        | 20 | ZT1240300007000 | GOMA SILENT-BLOCK BATERÍA            | 1     |
|         |        | 21 | ZT1226400191000 | REJILLA PROTECTOR RADIADOR DE AGUA   | 1     |
|         |        | 22 | ZT1276400111000 | ELECTROVENTILADOR DE RADIADOR D-M350 | 1     |
|         | 23     |    |                 |                                      |       |
|         | 24     |    |                 |                                      |       |

CATÁLOGO DE PIEZAS DE REPUESTO

**ZONTES** | 350 *EURO* 5

# MOTOR



| FIG. 1   | TAPA VALVULAS | Nº | CÓDIGO          | DESCRIPCIÓN               | CANT. |
|--|---------------|----|-----------------|---------------------------|-------|
|  |               | 1  | ZT1251112002093 | BULON M6X30               | 6     |
|  |               | 2  | ZT1251100067093 | BULON M6X10               | 6     |
|  |               | 3  | ZT1051371006000 | GRAMPA TUBO ACEITE        | 1     |
|  |               | 4  | ZT4050771003000 | TAPA VALVULAS             | 1     |
|  |               | 5  | ZT1051671003000 | JUNTA PLACA TAPA VALVULAS | 1     |
|  |               | 6  | ZT1051371005000 | PLACA TAPA VALVULAS       | 1     |
|  |               | 7  | ZT1051470005000 | JUNTA TAPA VALVULAS       | 1     |
|  |               | 8  | ZT4050771004000 | TAPA VALVULAS KIT         | 1     |
|  |               | 9  |                 |                           |       |
|  |               | 10 |                 |                           |       |
|  |               | 11 |                 |                           |       |
|  |               | 12 |                 |                           |       |
|  |               | 13 |                 |                           |       |
|  |               | 14 |                 |                           |       |
|  |               | 15 |                 |                           |       |
|  |               | 16 |                 |                           |       |
|  |               | 17 |                 |                           |       |
|  |               | 18 |                 |                           |       |
|  |               | 19 |                 |                           |       |
|  |               | 20 |                 |                           |       |
|  |               | 21 |                 |                           |       |
|  |               | 22 |                 |                           |       |
|  |               | 23 |                 |                           |       |
|  |               | 24 |                 |                           |       |

| FIG. 2 | TAPA DE CILINDRO / ARBOL DE LEVA | Nº | CÓDIGO          | DESCRIPCIÓN                        | CANT. |
|--------|----------------------------------|----|-----------------|------------------------------------|-------|
|        |                                  | 1  | ZT1251112024000 | BULON M8X117                       | 2     |
|        |                                  | 2  | ZT1251100067093 | BULON M6X10                        | 4     |
|        |                                  | 3  | ZT1051370006000 | PLACA PRESIÓN TAPA CILINDRO        | 1     |
|        |                                  | 4  | ZT1251201001094 | BULON M5X15                        | 2     |
|        |                                  | 5  | ZT1050171013000 | SEGURO DE BALANCINES               | 2     |
|        |                                  | 6  | ZT1050171002000 | BALANCIN ESCAPE                    | 1     |
|        |                                  | 7  | ZT1050171001000 | BALANCIN ADMISIÓN                  | 1     |
|        |                                  | 8  | ZT1251300077094 | TUERCA M10X1.25                    | 4     |
|        |                                  | 9  | ZT1251500041000 | ARANDELA 10.3X20X2                 | 4     |
|        |                                  | 10 | ZT1050154020000 | PASTILLAS REGULACIÓN VÁLVULAS 8.85 | 4     |
|        |                                  | 11 | ZT1050970004000 | BUJÍA M310                         | 1     |
|        |                                  | 12 | ZT1251112001093 | BULON M6X16                        | 2     |
|        |                                  | 13 | ZT1251513001019 | ARANDELA 6.3X12X1.6 COBRE          | 1     |
|        |                                  | 14 | ZT1051671001000 | JUNTA TAPA CILINDRO                | 1     |
|        |                                  | 15 | ZT1051301052000 | BUJE POSICIONADOR 12X20            | 2     |
|        |                                  | 16 | ZT1050954003000 | SENSOR ACEITE Y AGUA + O-RING      | 1     |
|        |                                  | 17 | ZT1051454009000 | O-RING 9X2                         | 1     |
|        |                                  | 18 | ZT1051468022000 | O-RING 11.11X1.78                  | 1     |
|        |                                  | 19 | ZT1050170002000 | ARBOL DE LEVAS                     | 1     |
|        |                                  | 20 | ZT1051371001000 | PLACA FIJ. ARBOL DE LEVAS          | 1     |
|        |                                  | 21 | ZT1050171003000 | EJE BALANCIN ADMISIÓN Y ESCAPE     | 2     |
|        | 22                               |    |                 |                                    |       |
|        | 23                               |    |                 |                                    |       |
|        |                                  | 24 |                 |                                    |       |

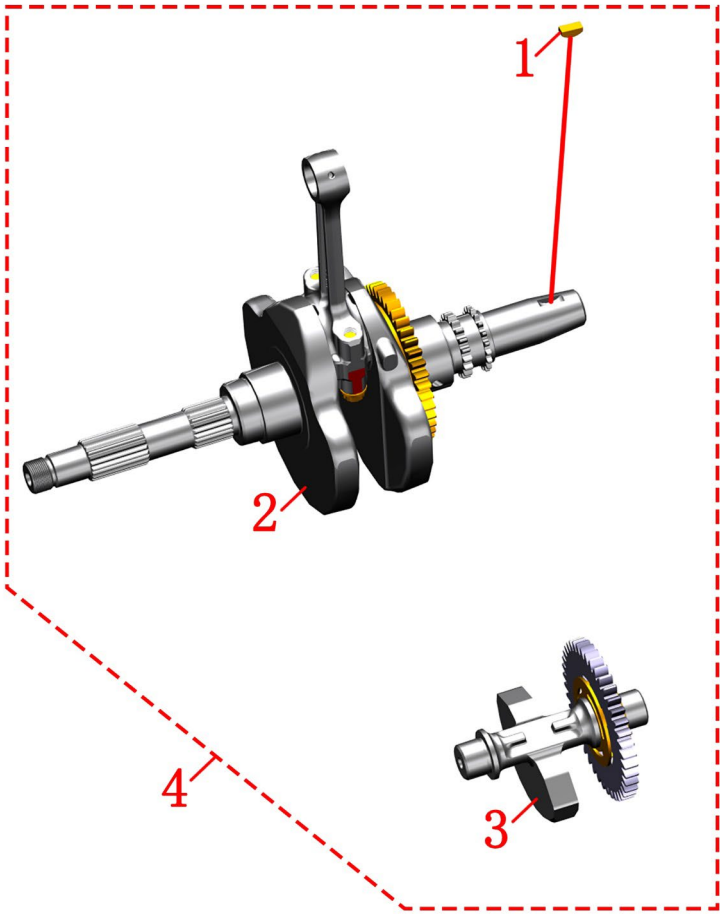
| FIG. 3 | TAPA CILINDRO CON VALVULAS | Nº | CÓDIGO          | DESCRIPCIÓN                | CANT. |
|--------|----------------------------|----|-----------------|----------------------------|-------|
|        |                            | 1  | ZT4050671009000 | TAPA CILINDRO CON VALVULAS | 1     |
|        |                            | 2  |                 |                            |       |
|        |                            | 3  |                 |                            |       |
|        |                            | 4  |                 |                            |       |
|        |                            | 5  |                 |                            |       |
|        |                            | 6  |                 |                            |       |
|        |                            | 7  |                 |                            |       |
|        |                            | 8  |                 |                            |       |
|        |                            | 9  |                 |                            |       |
|        |                            | 10 |                 |                            |       |
|        |                            | 11 |                 |                            |       |
|        |                            | 12 |                 |                            |       |
|        |                            | 13 |                 |                            |       |
|        |                            | 14 |                 |                            |       |
|        |                            | 15 |                 |                            |       |
|        |                            | 16 |                 |                            |       |
|        |                            | 17 |                 |                            |       |
|        |                            | 18 |                 |                            |       |
|        |                            | 19 |                 |                            |       |
|        |                            | 20 |                 |                            |       |
|        |                            | 21 |                 |                            |       |
|        |                            | 22 |                 |                            |       |
|        |                            | 23 |                 |                            |       |
|        |                            | 24 |                 |                            |       |

| FIG. 4 | TAPA CILINDRO CON VALVULAS | Nº | CÓDIGO          | DESCRIPCIÓN                      | CANT. |
|--------|----------------------------|----|-----------------|----------------------------------|-------|
|        |                            | 1  | ZT1050168016000 | SEGURO DE VÁLVULAS               | 8     |
|        |                            | 2  | ZT1050171011000 | PLATILLO SUP. VALVULA            | 4     |
|        |                            | 3  | ZT1050171010000 | RESORTE EXT. VALVULA             | 4     |
|        |                            | 4  | ZT1050171009000 | RESORTE INT. VALVULA             | 4     |
|        |                            | 5  | ZT1051553001000 | RETÉN VALVULA 5.0                | 4     |
|        |                            | 6  | ZT1051371004000 | PLASTILLO INF. VALVULA 17.2X25X1 | 4     |
|        |                            | 7  | ZT4050671002000 | TAPA CILINDRO                    | 1     |
|        |                            | 8  | ZT1050171005000 | VALVULA ESCAPE                   | 2     |
|        |                            | 9  | ZT1050171004000 | VALVULA ADMISIÓN                 | 2     |
|        |                            | 10 | ZT1251111011000 | ESPARRAGO M8X38                  | 2     |
|        |                            | 11 | ZT4050671009000 | TAPA CILINDRO CON VALVULAS       | 1     |
|        | 12                         |    |                 |                                  |       |
|        | 13                         |    |                 |                                  |       |
|        | 14                         |    |                 |                                  |       |
|        | 15                         |    |                 |                                  |       |
|        | 16                         |    |                 |                                  |       |
|        | 17                         |    |                 |                                  |       |
|        | 18                         |    |                 |                                  |       |
|        | 19                         |    |                 |                                  |       |
|        | 20                         |    |                 |                                  |       |
|        | 21                         |    |                 |                                  |       |
|        | 22                         |    |                 |                                  |       |
|        | 23                         |    |                 |                                  |       |
|        | 24                         |    |                 |                                  |       |

| FIG. 5 | CILINDRO 350 COMPLETO | Nº | CÓDIGO          | DESCRIPCIÓN             | CANT. |
|--------|-----------------------|----|-----------------|-------------------------|-------|
|        |                       | 1  | ZT1250105136093 | BULON M6X12             | 2     |
|        |                       | 2  | ZT1051371009000 | TUBO ENTRADA AGUA       | 1     |
|        |                       | 3  | ZT1051454007000 | 19x2.65 EPDM O-RING     | 1     |
|        |                       | 4  | ZT4050571001000 | CILINDRO 350            | 1     |
|        |                       | 5  | ZT1050471002000 | AROS 1                  | 1     |
|        |                       | 6  | ZT1050471003000 | AROS 2                  | 1     |
|        |                       | 7  | ZT1050471004000 | AROS ACEITE             | 1     |
|        |                       | 8  | ZT1050471011000 | SEGURO PERNO PISTON     | 2     |
|        |                       | 9  | ZT1050471001000 | PISTON 350              | 1     |
|        |                       | 10 | ZT1050471005000 | PERNO PISTON 18X44X11   | 1     |
|        |                       | 11 | ZT1050471016000 | KIT PISTON 350          | 1     |
|        |                       | 12 | ZT1051671005000 | JUNTA BASE CILINDRO     | 1     |
|        |                       | 13 | ZT1051301052000 | BUJE POSICIONADOR 12X20 | 2     |
|        |                       | 14 | ZT4050571002000 | CILINDRO 350 COMPLETO   | 1     |
|        |                       | 15 |                 |                         |       |
|        |                       | 16 |                 |                         |       |
|        |                       | 17 |                 |                         |       |
|        |                       | 18 |                 |                         |       |
|        |                       | 19 |                 |                         |       |
|        |                       | 20 |                 |                         |       |
|        |                       | 21 |                 |                         |       |
|        |                       | 22 |                 |                         |       |
|        |                       | 23 |                 |                         |       |
|        |                       | 24 |                 |                         |       |

| FIG. 6 | EMBRAGUE CENTRIFUGO | Nº | CÓDIGO          | DESCRIPCIÓN                  | CANT. |
|--------|---------------------|----|-----------------|------------------------------|-------|
|        |                     | 1  | ZT1050771003000 | CORREA VARIADOR              | 1     |
|        |                     | 2  | ZT1251300097000 | TUERCA M18X1                 | 1     |
|        |                     | 3  | ZT1051471003000 | O-RING 26X2                  | 2     |
|        |                     | 4  | ZT1251700162000 | BUJE VARIADOR 18.5X30X19.1   | 1     |
|        |                     | 5  | ZT1050771001000 | VARIADOR COMPLETO            | 1     |
|        |                     | 6  | ZT1251500094094 | ARANDELA 23.2X40X5           | 1     |
|        |                     | 7  | ZT1251311005093 | TUERCA M14X1                 | 1     |
|        |                     | 8  | ZT1051471005000 | O-RING 21.2X1.8              | 2     |
|        |                     | 9  | ZT1050770004000 | BUJE 14X5X25X16              | 1     |
|        |                     | 10 | ZT1050771002000 | EMBRAGUE CENTRIFUGO COMPLETO | 1     |
|        |                     | 11 |                 |                              |       |
|        |                     | 12 |                 |                              |       |
|        |                     | 13 |                 |                              |       |
|        |                     | 14 |                 |                              |       |
|        |                     | 15 |                 |                              |       |
|        |                     | 16 |                 |                              |       |
|        |                     | 17 |                 |                              |       |
|        |                     | 18 |                 |                              |       |
|        |                     | 19 |                 |                              |       |
|        |                     | 20 |                 |                              |       |
|        |                     | 21 |                 |                              |       |
|        |                     | 22 |                 |                              |       |
|        |                     | 23 |                 |                              |       |
|        |                     | 24 |                 |                              |       |

| FIG. 7 | EMBRAGUE CENTRIFUGO | Nº | CÓDIGO          | DESCRIPCIÓN                  | CANT. |
|--------|---------------------|----|-----------------|------------------------------|-------|
|        |                     | 1  | ZT1050671002000 | PLATO VENTILACIÓN VARIADOR   | 1     |
|        |                     | 2  | ZT1050671003000 | BUJE VARIADOR                | 1     |
|        |                     | 3  | ZT1050671004000 | PORTA RODILLOS VARIADOR      | 1     |
|        |                     | 4  | ZT1050671005000 | RODILLO VARIADOR             | 8     |
|        |                     | 5  | ZT1050671007000 | GUIA DE VARIADOR             | 4     |
|        |                     | 6  | ZT1050671006000 | TAPA RODILLO VARIADOR        | 1     |
|        |                     | 7  | ZT1050771001000 | VARIADOR COMPLETO            | 1     |
|        |                     | 8  | ZT1050771006000 | CAMPANA EMBRAGUE CENTRIFUGO  | 1     |
|        |                     | 9  | ZT1050771007000 | POLEA EMBRAGUE CENTRIFUGO    | 1     |
|        |                     | 10 | ZT1050771005000 | PATIN EMBRAGUE CENTRIFUGO    | 1     |
|        |                     | 11 | ZT1050771002000 | EMBRAGUE CENTRIFUGO COMPLETO | 1     |
|        |                     | 12 |                 |                              |       |
|        |                     | 13 |                 |                              |       |
|        |                     | 14 |                 |                              |       |
|        |                     | 15 |                 |                              |       |
|        |                     | 16 |                 |                              |       |
|        |                     | 17 |                 |                              |       |
|        |                     | 18 |                 |                              |       |
|        |                     | 19 |                 |                              |       |
|        |                     | 20 |                 |                              |       |
|        |                     | 21 |                 |                              |       |
|        |                     | 22 |                 |                              |       |
|        |                     | 23 |                 |                              |       |
|        |                     | 24 |                 |                              |       |

| FIG. 8  | BALANCEADOR | Nº | CÓDIGO          | DESCRIPCIÓN               | CANT. |
|---|-------------|----|-----------------|---------------------------|-------|
|  |             | 1  | ZT1050470016000 | CHAVETA CIGÜEÑAL 5X5.7X16 | 1     |
|   |             | 2  | ZT1050471013000 | CIGÜEÑAL COMPLETO         | 1     |
|   |             | 3  | ZT1050571002000 | BALANCEADOR               | 1     |
|   |             | 4  |                 |                           |       |
|   |             | 5  |                 |                           |       |
|   |             | 6  |                 |                           |       |
|   |             | 7  |                 |                           |       |
|   |             | 8  |                 |                           |       |
|   |             | 9  |                 |                           |       |
|   |             | 10 |                 |                           |       |
|   |             | 11 |                 |                           |       |
|   |             | 12 |                 |                           |       |
|   |             | 13 |                 |                           |       |
|   |             | 14 |                 |                           |       |
|   |             | 15 |                 |                           |       |
|   |             | 16 |                 |                           |       |
|   |             | 17 |                 |                           |       |
|   |             | 18 |                 |                           |       |
|   |             | 19 |                 |                           |       |
|   |             | 20 |                 |                           |       |
|   |             | 21 |                 |                           |       |
|   |             | 22 |                 |                           |       |
|   |             | 23 |                 |                           |       |
|   |             | 24 |                 |                           |       |

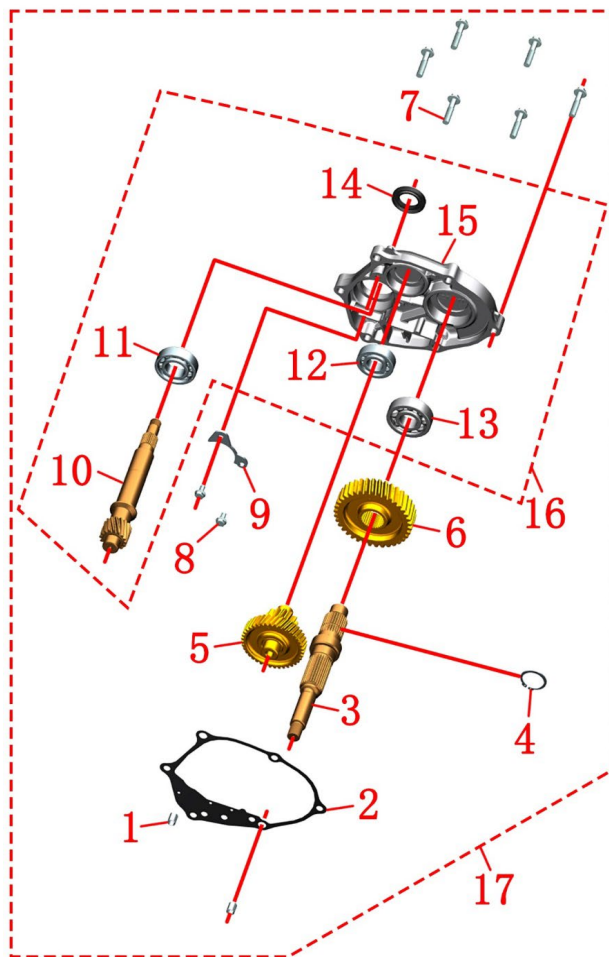
| FIG. 9 | SEMICARTER IZQUIERDO COMPLETO | Nº | CÓDIGO          | DESCRIPCIÓN                   | CANT. |
|--------|-------------------------------|----|-----------------|-------------------------------|-------|
|        |                               | 1  | ZT1251112005093 | BULON M6X75                   | 8     |
|        |                               | 2  | ZT1251401001000 | BUJE POSICIONADOR 8X14        | 2     |
|        |                               | 3  | ZT1250104006097 | BULON M6X12                   | 1     |
|        |                               | 4  | ZT1276200043000 | ABRAZADERA FLEXIBLE 57MM      | 1     |
|        |                               | 5  | ZT4050171010000 | SEMICARTER IZQUIERDO COMPLETO | 1     |
|        |                               | 6  | ZT1051371016000 | BUJE 12.2X20X35.3             | 1     |
|        |                               | 7  | ZT1051468023000 | O-RING 23X2                   | 1     |
|        |                               | 8  | ZT1051468020000 | O-RING 15.3X2.2               | 2     |
|        |                               | 9  | ZT1051371015000 | 23X28.5X30.6                  | 1     |
|        |                               | 10 | ZT1051371014000 | BUJE FRICCION 20X23X30        | 1     |
|        |                               | 11 | ZT1251111009000 | ESPARRAGO M10X1.25X190        | 2     |
|        |                               | 12 | ZT4050970001000 | INYECTOR CARTER IZQ.          | 1     |
|        |                               | 13 | ZT1050870008000 | VALVULA ALIVIO BOMBA ACEITE   | 1     |
|        |                               | 14 | ZT1051454025000 | O-RING 9.8X2.4 NITRILO        | 1     |
|        |                               | 15 | ZT1050870010000 | FILTRO MALLA 53X50.5          | 1     |
|        |                               | 16 | ZT1051370002000 | BUJE 10X15X47.5               | 1     |
|        |                               | 17 | ZT1251513012019 | JUNTA COBRE 8.3X15.5X1        | 1     |
|        |                               | 18 | ZT1251100123093 | BULON M8X25                   | 1     |
|        |                               | 19 | ZT1051372001000 | BUJE 10X25X22                 | 1     |
|        |                               | 20 | ZT1251300053000 | TAPON CARGA ACEITE M14X1.5    | 1     |
|        |                               | 21 | ZT1051453002000 | O-RING 13.8X2.5               | 1     |
|        |                               | 22 | ZT1051970001000 | TUBO AGUA CARTER IZQ.         | 1     |
|        |                               | 23 | ZT1050471008000 | RODAMIENTO 40X44X15 IZQUIERDO | 2     |
|        |                               | 24 | ZT1050871006000 | FILTRO ACEITE 350 SCOOTER     | 1     |

| FIG. 10 | SEMICARTER IZQUIERDO COMPLETO | Nº | CÓDIGO          | DESCRIPCIÓN                       | CANT. |  |
|---------|-------------------------------|----|-----------------|-----------------------------------|-------|--|
|         |                               | 25 | ZT1251100327094 | TUERCA M20X1.5                    | 1     |  |
|         |                               | 26 | ZT1251100299000 | TAPON ACEITE M10X1.25X10          | 1     |  |
|         |                               | 27 | ZT1051468022000 | O-RING 11.11X1.78                 | 1     |  |
|         |                               | 28 | ZT1251100066093 | TAPÓN DRENAJE ACEITE M12X1.5X15   | 1     |  |
|         |                               | 29 | ZT1244100033000 | JUNTA 12X20X2                     | 1     |  |
|         |                               | 30 | ZT1250900340000 | SEGUER 68 RETEN                   | 1     |  |
|         |                               | 31 | ZT1051570002000 | ARANDELA SELLO 35X66X7            | 1     |  |
|         |                               | 32 | ZT1251100166000 | BULON RESORTE CABALLETE           | 1     |  |
|         |                               | 33 | ZT1250601088000 | RODAMIENTO 6204/P5C3 NITRURACIÓN  | 1     |  |
|         |                               | 34 | ZT1250601052000 | RODAMIENTO 62/22/P5 (NITRURACIÓN) | 1     |  |
|         |                               | 35 | ZT1250509005000 | SEGUER 55 RETEN                   | 1     |  |
|         |                               | 36 | ZT1051571002000 | RETEN 38X56X7                     | 1     |  |
|         |                               | 37 | ZT1250601135000 | RODAMIENTO 6006-2RS/P5C3          | 1     |  |
|         |                               | 38 | ZT4050171006000 | SEMICARTER IZQUIERDO              | 1     |  |
|         |                               | 39 | ZT1250601082000 | RODAMIENTO 6304-C3                | 1     |  |
|         |                               | 40 |                 |                                   |       |  |
|         |                               | 41 |                 |                                   |       |  |
|         |                               | 42 |                 |                                   |       |  |
|         |                               | 43 |                 |                                   |       |  |
|         |                               | 44 |                 |                                   |       |  |
|         |                               | 45 |                 |                                   |       |  |
|         |                               | 46 |                 |                                   |       |  |
|         |                               | 47 |                 |                                   |       |  |
|         |                               | 48 |                 |                                   |       |  |

| FIG. 11 | SEMICARTER DERECHO | Nº | CÓDIGO          | DESCRIPCIÓN                      | CANT. |  |
|---------|--------------------|----|-----------------|----------------------------------|-------|--|
|         |                    | 1  | ZT1251112005093 | BULON M6X75                      | 5     |  |
|         |                    | 2  | ZT1051371016000 | BUJE 12.2X20X35.3                | 1     |  |
|         |                    | 3  | ZT1051468023000 | O-RING 23X2                      | 1     |  |
|         |                    | 4  | ZT1051468020000 | O-RING 15.3X2.2                  | 2     |  |
|         |                    | 5  | ZT1251100299000 | TAPON ACEITE M10X1.25X10         | 1     |  |
|         |                    | 6  | ZT1051468022000 | O-RING 11.11X1.78                | 1     |  |
|         |                    | 7  | ZT1251111009000 | ESPARRAGO M10X1.25X190           | 2     |  |
|         |                    | 8  | ZT1276200043000 | ABRAZADERA FLEXIBLE 57MM         | 1     |  |
|         |                    | 9  | ZT4050271005000 | SEMICARTER DERECHO C/ RODAMIENTO | 1     |  |
|         |                    | 10 | ZT1051370001000 | BUJE 10X15X28.2                  | 1     |  |
|         |                    | 11 | ZT1050471009000 | RODAMIENTO 40X44X15              | 2     |  |
|         |                    | 12 | ZT1250601082000 | RODAMIENTO 6304-C3               | 1     |  |
|         |                    | 13 | ZT1250601129000 | RODAMIENTO 6304-P5-C3            | 1     |  |
|         |                    | 14 | ZT4050271004000 | SEMICARTER DERECHO               | 1     |  |
|         |                    | 15 | ZT1051171001000 | BUJE SUP. SEMICARTER DERECHO     | 1     |  |
|         |                    | 16 | ZT4050271006000 | SEMICARTER DERECHO COMPLETO      | 1     |  |
|         |                    | 17 |                 |                                  |       |  |
|         |                    | 18 |                 |                                  |       |  |
|         |                    | 19 |                 |                                  |       |  |
|         |                    | 20 |                 |                                  |       |  |
|         |                    | 21 |                 |                                  |       |  |
|         |                    | 22 |                 |                                  |       |  |
|         |                    | 23 |                 |                                  |       |  |
|         |                    | 24 |                 |                                  |       |  |

FIG. 12

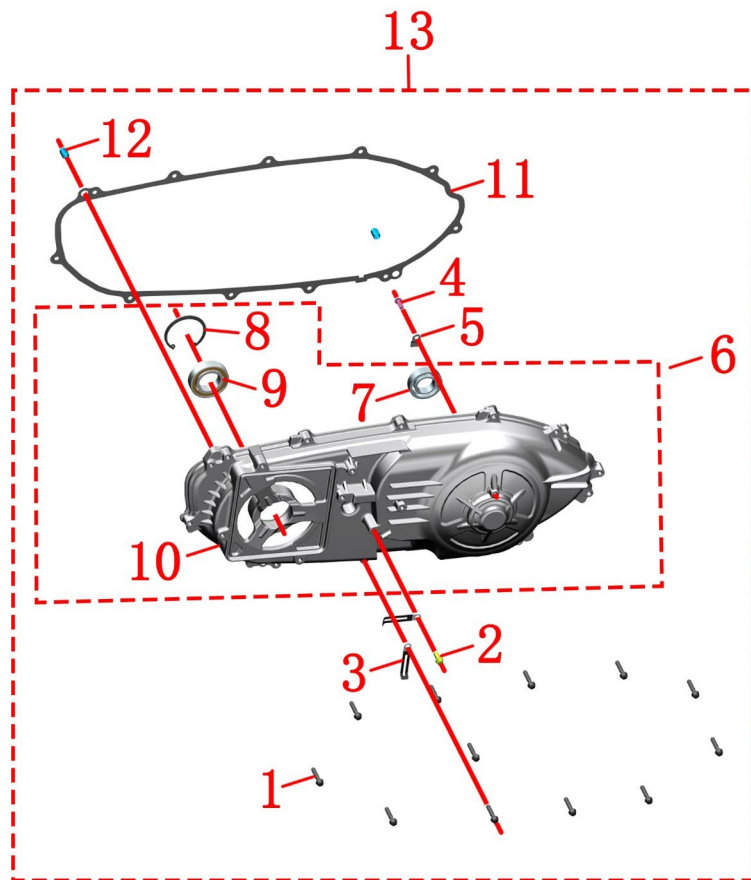
TAPA REDUCTOR COMPLETO



| Nº | CÓDIGO           | DESCRIPCIÓN                        | CANT. |
|----|------------------|------------------------------------|-------|
| 1  | ZT1251401003000  | BUJE POSICIONADOR 10X14            | 2     |
| 2  | ZT1051670004000  | JUNTA TAPA REDUCTOR                | 1     |
| 3  | ZT4051771002000  | EJE RUEDA TRASERA                  | 1     |
| 4  | ZT1250505016000  | SEGUER 29X1.5                      | 1     |
| 5  | ZT4051671001000  | ENGRANAJE DOBLE REDUCTOR           | 1     |
| 6  | ZT4051671003000  | ENGRANAJE REDUCTOR                 | 1     |
| 7  | ZT1250101069093  | BULON M8X40                        | 6     |
| 8  | ZT1250105136093  | BULON M6X12                        | 1     |
| 9  | ZT1051371013000  | PLACA FIJ. RODAMIENTO EJE PRIMARIO | 1     |
| 10 | ZT4051771001000  | EJE PRIMARIO                       | 1     |
| 11 | ZT1250601137000  | RODAMIENTO 6205/C3H-F              | 1     |
| 12 | ZT1250601088000  | RODAMIENTO 6204/P5C3 NITRURACIÓN   | 1     |
| 13 | ZT12506011330000 | RODAMIENTO 63/22P5C3               | 1     |
| 14 | ZT1051570001000  | RETEN 25X42X6                      | 1     |
| 15 | ZT4051071001000  | TAPA REDUCTOR                      | 1     |
| 16 | ZT4051071002000  | TAPA REDCUTOR C/ EJE PRIMARIO      | 1     |
| 17 | ZT4051071003000  | TAPA REDUCTOR COMPLETO             | 1     |
| 18 |                  |                                    |       |
| 19 |                  |                                    |       |
| 20 |                  |                                    |       |
| 21 |                  |                                    |       |
| 22 |                  |                                    |       |
| 23 |                  |                                    |       |
| 24 |                  |                                    |       |

FIG. 13

TAPA CARTER IZQUIERDO



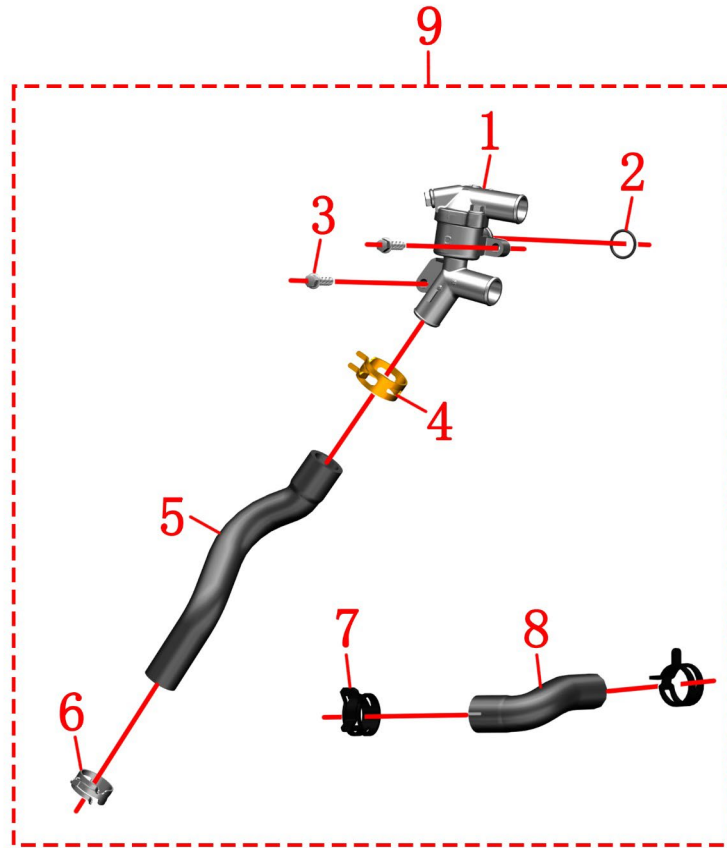
| Nº | CÓDIGO          | DESCRIPCIÓN                         | CANT. |
|----|-----------------|-------------------------------------|-------|
| 1  | ZT1251112002093 | BULON M6X30                         | 12    |
| 2  | ZT1250104006097 | BULON M6X12                         | 1     |
| 3  | ZT1276200043000 | ABRAZADERA FLEXIBLE 57MM            | 2     |
| 4  | ZT1251100120093 | BULÓN M6X12                         | 1     |
| 5  | ZT1051368005000 | PLACA SEGURO RODAMIENTO CARTER IZQ. | 1     |
| 6  | ZT4050371002000 | TAPA CARTER IZQUIERDO C/RODAMIENTOS | 1     |
| 7  | ZT1250601092000 | RODAMIENTO 6005-2RS/P5C3            | 1     |
| 8  | ZT1250509005000 | SEGUER 55                           | 1     |
| 9  | ZT1250601135000 | RODAMIENTO 6006-2RS/P5C3            | 1     |
| 10 | ZT1051171003000 | TAPA CARTER IZQUIERDO               | 1     |
| 11 | ZT1051670006000 | JUNTA TAPA CARTER IZQUIERDO         | 1     |
| 12 | ZT1251401003000 | BUJE POSICIONADOR 10X14             | 2     |
| 13 | ZT4050371003000 | TAPA CARTER IZQUIERDO COMPLETO      | 1     |
| 14 |                 |                                     |       |
| 15 |                 |                                     |       |
| 16 |                 |                                     |       |
| 17 |                 |                                     |       |
| 18 |                 |                                     |       |
| 19 |                 |                                     |       |
| 20 |                 |                                     |       |
| 21 |                 |                                     |       |
| 22 |                 |                                     |       |
| 23 |                 |                                     |       |
| 24 |                 |                                     |       |

| FIG. 14 | TAPA CARTER DERECHO | Nº              | CÓDIGO                 | DESCRIPCIÓN               | CANT. |
|---------|---------------------|-----------------|------------------------|---------------------------|-------|
|         |                     | 1               | ZT1251112003093        | BULON M6X45               | 14    |
|         |                     | 2               | ZT1251513001019        | ARANDELA 6.3X12X1.6 COBRE | 1     |
|         |                     | 3               | ZT4050956003051        | TAPOM M30X1.5 GRIS        | 1     |
|         |                     |                 | ZT1050956036021        | TAPON M30X1.5 NEGRO       |       |
|         |                     | 4               | ZT1051453003000        | O-RING 27.4X2.65          | 1     |
|         |                     | 5               | ZT1040953002093        | TAPON M14X1.5             | 1     |
|         |                     | 6               | ZT1051453009000        | O-RING 13X2.8             | 1     |
|         |                     | 7               | ZT1050870011000        | TAPON NIVEL ACEITE        | 1     |
|         |                     | 8               | ZT1051468005000        | O-RING 18X3X3.5           | 1     |
|         |                     | 9               | ZT1251401003000        | BUJE POSICIONADOR 10X14   | 2     |
|         |                     | 10              | ZT1051671004000        | JUNTA TAPA CARTER DERECHO | 1     |
|         |                     | 11              | ZT1251112002093        | BULON M6X30               | 4     |
|         |                     | 12              | ZT1250105136093        | BULON M6X12               | 1     |
|         |                     | 13              | ZT1051470010000        | O-RING 5.6X1              | 1     |
|         |                     | 14              | ZT1051368006000        | CONECTOR RACOR DE AGUA    | 1     |
|         |                     | 15              | ZT1051470012000        | O-RING 21X1.9             | 1     |
|         |                     | 16              | ZT1051470009000        | O-RING 11.5X1.8           | 1     |
|         |                     | 17              | ZT1251401001000        | BUJE POSICIONADOR 8X14    | 2     |
|         |                     |                 | ZT4050971002000        | TAPA BOMBA AGUA GRIS      |       |
|         |                     | 18              | ZT4050971003000        | TAPA BOMBA AGUA NEGRO     | 1     |
|         |                     |                 | ZT1051470008000        | O-RING TAPA BOMBA AGUA    |       |
|         | 19                  | ZT1051470008000 | O-RING TAPA BOMBA AGUA | 1                         |       |
|         | 20                  | ZT1051971009000 | TURBINA BOMBA AGUA     | 1                         |       |
|         | 21                  | ZT1051970003000 | EJE BOMBA AGUA         | 1                         |       |

| FIG. 15 | TAPA CARTER DERECHO | Nº | CÓDIGO          | DESCRIPCIÓN                   | CANT. |
|---------|---------------------|----|-----------------|-------------------------------|-------|
|         |                     | 22 | ZT4050470005000 | TAPA CARTER DERECHO           | 1     |
|         |                     |    | ZT4050471004000 | TAPA CARTER DER. COMPL. NEGRO |       |
|         |                     | 23 | ZT1051954006000 | RETEN DE AGUA                 | 1     |
|         |                     | 24 | ZT1051570007000 | RETÉN 12X24X5 NITRILLO        | 1     |
|         |                     | 25 | ZT1051970009000 | TUBO DE VENTEO                | 1     |
|         |                     | 26 | ZT4050470001051 | TAPA CARTER DER. GRIS         | 1     |
|         |                     |    | ZT4050471002000 | TAPA CARTER DER. NEGRO        |       |
|         |                     | 27 | ZT1051570004000 | RETEN 12X22X5                 | 1     |
|         |                     | 28 | ZT1250601128000 | RODAMIENTO 6001/P5C3 GB276    | 1     |
|         |                     |    | ZT1250601086000 | RODAMIENTO 6001/P5C3          |       |
|         |                     | 29 |                 |                               |       |
|         |                     | 30 |                 |                               |       |
|         |                     | 31 |                 |                               |       |
|         |                     | 32 |                 |                               |       |
|         |                     | 33 |                 |                               |       |
|         |                     | 34 |                 |                               |       |
|         |                     | 35 |                 |                               |       |
|         |                     | 36 |                 |                               |       |
|         |                     | 37 |                 |                               |       |
|         |                     | 38 |                 |                               |       |
|         |                     | 39 |                 |                               |       |
|         |                     | 40 |                 |                               |       |
|         | 41                  |    |                 |                               |       |
|         | 42                  |    |                 |                               |       |

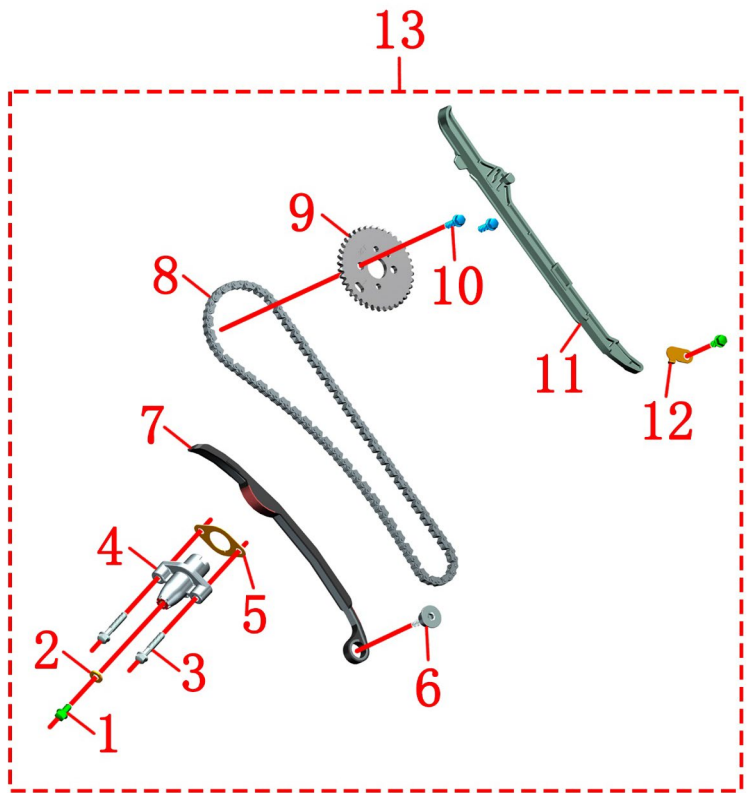
FIG. 16

TERMOSTATO KIT MANGUERAS



| Nº | CÓDIGO          | DESCRIPCIÓN              | CANT. |
|----|-----------------|--------------------------|-------|
| 1  | ZT1051971003000 | TERMOSTATO               | 1     |
| 2  | ZT1051471002000 | O-RING 18.7X1.9          | 1     |
| 3  | ZT1251100061093 | BULON M6X22              | 2     |
| 4  | ZT1051371017000 | ABRAZADERA 25            | 1     |
| 5  | ZT1051971001000 | TUBO ENTRADA BOMBA AGUA  | 1     |
| 6  | ZT1051370012000 | ABRAZADERA CLIP 24       | 1     |
| 7  | ZT1274200090000 | ABRAZADERA CLIP          | 2     |
| 8  | ZT1051971010000 | TUBO SALIDA BOMBA AGUA   | 1     |
| 9  | ZT1051971008000 | TERMOSTATO KIT MANGUERAS | 1     |
| 10 |                 |                          |       |
| 11 |                 |                          |       |
| 12 |                 |                          |       |
| 13 |                 |                          |       |
| 14 |                 |                          |       |
| 15 |                 |                          |       |
| 16 |                 |                          |       |
| 17 |                 |                          |       |
| 18 |                 |                          |       |
| 19 |                 |                          |       |
| 20 |                 |                          |       |
| 21 |                 |                          |       |
| 22 |                 |                          |       |
| 23 |                 |                          |       |
| 24 |                 |                          |       |

| FIG. 17 | VOLANTE MAGNETICO COMPLETO 350 | Nº                             | CÓDIGO                            | DESCRIPCIÓN | CANT. |
|---------|--------------------------------|--------------------------------|-----------------------------------|-------------|-------|
|         | 1                              | ZT1251112002093                | BULON M6X30                       | 2           |       |
|         | 2                              | ZT1051070001000                | MOTOR DE ARRANQUE                 | 1           |       |
|         | 3                              | ZT1051070006000                | EJE ENGRANAJE DOBLE ARRANQUE      | 1           |       |
|         | 4                              | ZT1051070005000                | ENGRANAJE DOBLE ARRANQUE          | 1           |       |
|         | 5                              | ZT1051070008000                | CORONA ARRANQUE                   | 1           |       |
|         | 6                              | ZT1051370017000                | ARANDELA 25.2X37X1.6              | 1           |       |
|         | 7                              |                                |                                   |             |       |
|         | 8                              | ZT1051071001000                | BOBINA VOLANTE MAGNETICO          | 1           |       |
|         | 9                              | ZT1251201001094                | BULON M5X15                       | 3           |       |
|         | 10                             | ZT1251112002093                | BULON M6X30                       | 3           |       |
|         |                                | ZT1250205103093                | BULON M6X25                       |             |       |
|         | 11                             | ZT1051353005000                | PLACA DE PRESIÓN BOBINA MAGNETICO | 1           |       |
|         | 12                             | ZT1251100341094                | BULON M10X1.25X45                 | 1           |       |
|         |                                | ZT1251100064094                | BULON M10X45X1.25                 |             |       |
|         | 13                             | ZT1251500095094                | ARANDELA 10.3X28X4                | 1           |       |
| 14      | ZT1051071002000                | VOLANTE MAGNETICO 350          | 1                                 |             |       |
| 15      | ZT1051071003000                | VOLANTE MAGNETICO COMPLETO 350 | 1                                 |             |       |
| 18      |                                |                                |                                   |             |       |
| 19      |                                |                                |                                   |             |       |
| 20      |                                |                                |                                   |             |       |
| 21      |                                |                                |                                   |             |       |
| 22      |                                |                                |                                   |             |       |
| 23      |                                |                                |                                   |             |       |
| 24      |                                |                                |                                   |             |       |

| FIG. 18 | KIT DISTRIBUCIÓN  | Nº | CÓDIGO          | DESCRIPCIÓN                      | CANT. |
|---------|---|----|-----------------|----------------------------------|-------|
|         |  | 1  | ZT1251100067093 | BULON M6X10                      | 2     |
|         |   | 2  | ZT1251513001019 | ARANDELA 6.3X12X1.6 COBRE        | 1     |
|         |   | 3  | ZT1251112002093 | BULON M6X30                      | 2     |
|         |   | 4  | ZT1051270004000 | TENSOR CADENA DISTRIBUCIÓN       | 1     |
|         |   | 5  | ZT1051253004000 | JUNTA TENSOR CADENA DISTRIBUCIÓN | 1     |
|         |   | 6  | ZT1251100165000 | BULON PIVOT M6X16-13.8X8.7       | 1     |
|         |   | 7  | ZT1051270001000 | PATIN TENSOR CADENA DISTRIBUCIÓN | 1     |
|         |   | 8  | ZT1051270003000 | CADENA DE DISTRIBUCIÓN           | 1     |
|         |   | 9  | ZT1050170001000 | PIÑÓN CADENA DISTRIBUCIÓN        | 1     |
|         |   | 10 | ZT1251112001093 | BULON M6X16                      | 2     |
|         |   | 11 | ZT1051270002000 | PATIN GUIA CADENA DISTRIBUCIÓN   | 1     |
|         |   | 12 | ZT1051370004000 | BULON PATIN GUIA DISTRIBUCIÓN    | 1     |
|         |   | 13 | ZT1051270005000 | KIT COMPLETO DISTRIBUCIÓN        | 1     |
|         | 14  |    |                 |                                  |       |
|         | 15  |    |                 |                                  |       |
|         | 16  |    |                 |                                  |       |
|         | 17  |    |                 |                                  |       |
|         | 18  |    |                 |                                  |       |
|         | 19  |    |                 |                                  |       |
|         | 20  |    |                 |                                  |       |
|         | 21  |    |                 |                                  |       |
|         | 22  |    |                 |                                  |       |
|         | 23  |    |                 |                                  |       |
|         | 24  |    |                 |                                  |       |

| FIG. 19 | KIT SISTEMA LUBRICACIÓN | Nº | CÓDIGO          | DESCRIPCIÓN                   | CANT. |
|---------|-------------------------|----|-----------------|-------------------------------|-------|
|         |                         | 1  | ZT1251112004093 | BULON M6X60                   | 2     |
|         |                         | 2  | ZT1050870002000 | CADENA BOMBA ACEITE 6.35X5X58 | 1     |
|         |                         | 3  | ZT1050870013000 | BOMBA DE ACEITE               | 1     |
|         |                         | 4  | ZT1050870008000 | VALVULA ALIVIO BOMBA ACEITE   | 1     |
|         |                         | 5  | ZT1051454025000 | O-RING 9.8X2.4 NITRILO        | 1     |
|         |                         | 6  | ZT1251100327094 | TUERCA M20X1.5                | 1     |
|         |                         | 7  | ZT1050871006000 | FILTRO ACEITE 350 SCOOTER     | 1     |
|         |                         | 8  | ZT1050870010000 | FILTRO MALLA 53X50.5          | 2     |
|         |                         | 9  | ZT1050871002000 | KIT SISTEMA LUBRICACIÓN       | 1     |
|         | 10                      |    |                 |                               |       |
|         | 11                      |    |                 |                               |       |
|         | 12                      |    |                 |                               |       |
|         | 13                      |    |                 |                               |       |
|         | 14                      |    |                 |                               |       |
|         | 15                      |    |                 |                               |       |
|         | 16                      |    |                 |                               |       |
|         | 17                      |    |                 |                               |       |
|         | 18                      |    |                 |                               |       |
|         | 19                      |    |                 |                               |       |
|         | 20                      |    |                 |                               |       |
|         | 21                      |    |                 |                               |       |
|         | 22                      |    |                 |                               |       |
|         | 23                      |    |                 |                               |       |
|         | 24                      |    |                 |                               |       |



Jorge Peralta Martínez 2330, Los Troncos del Talar - CP. 1618 (B1608FEH) - Tigre, Buenos Aires, Argentina

 [betamotorargentina](#)

 [www.betamotor.com.ar](http://www.betamotor.com.ar)